



HOT DIAMONDS

Autumn/Winter 2024



Welcome to
HOT DIAMONDS
Autumn/Winter 2024



Willow Collection

Little jewellery details,
with a dainty twist.

All designs are in either rhodium or 18ct gold-plated 925 sterling silver with at least one real diamond.
Rings available in sizes K to S.

NEW



ROPE EARRINGS
£110 (DE804)



ROPE EARRINGS
£110 (DE805)



ROPE NECKLACE
chain: 16-18" (40-45cm)
£120 (DN210)



ROPE BRACELET
£90 (DL692)



ROPE RING
£80 (DR289)

All designs are in either rhodium or 18ct gold-plated 925 sterling silver with at least one real diamond.
Rings available in sizes K to S.

NEW



SLEEK EARRINGS
£110 (DE806)



SLEEK RING
£55 (DR290)



SLEEK NECKLACE
chain: 16-18" (40-45cm)
£150 (DN211)



SLEEK BRACELET
£95 (DL693)

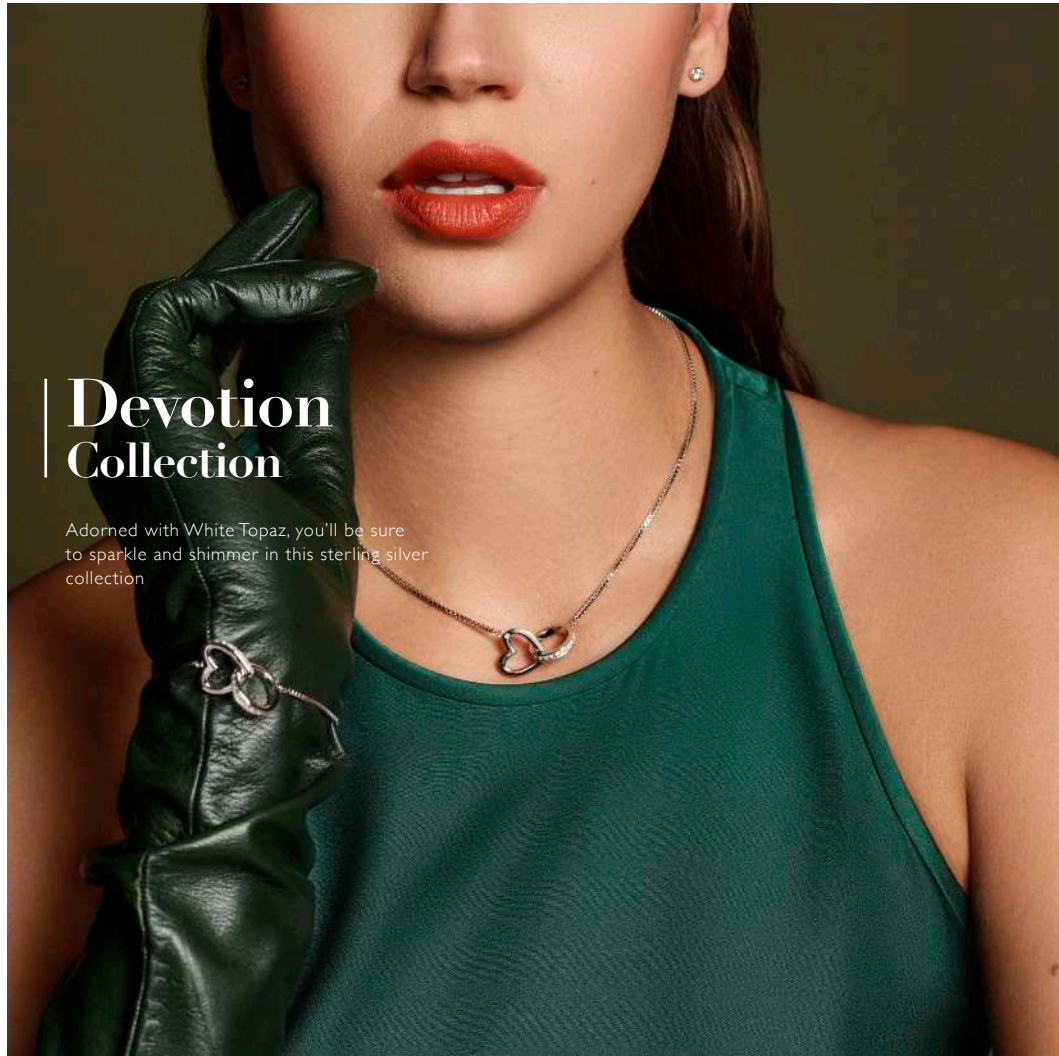
All designs are in either rhodium or 18ct gold-plated 925 sterling silver with at least one real diamond.
Rings available in sizes K to S.



Sleek Collection

Two delicate sleek curves loop together to form this beautifully crafted collection

All designs are in either rhodium or 18ct gold-plated 925 sterling silver with at least one real diamond.
Rings available in sizes K to S.



Devotion Collection

Adorned with White Topaz, you'll be sure to sparkle and shimmer in this sterling silver collection

All designs are in either rhodium or 18ct gold-plated 925 sterling silver with at least one real diamond.
Rings available in sizes K to S.



DEVOTION NECKLACE
chain: 16-18" (40-45cm)
£195 (DN204)



DEVOTION BRACELET
£185 (DL672)

All designs are in either rhodium or 18ct gold-plated 925 sterling silver with at least one real diamond.
Rings available in sizes K to S.

NEW



**ESSENCE HEART
STUD EARRINGS**
£85 (DE820)



**ESSENCE HEART
HUGGIE EARRINGS**
£95 (DE821)



**ESSENCE HEART
NECKLACE**
chain: 16-18" (40-45cm)
£110 (DPI029)



**ESSENCE HEART
BRACELET**
£125 (DL696)

All designs are in either rhodium or 18ct gold-plated 925 sterling silver with at least one real diamond.
Rings available in sizes K to S.



Essence Collection

Our classic heart collection just got an upgrade with our sunbeam detail hearts and always a real diamond in every design.

All designs are in either rhodium or 18ct gold-plated 925 sterling silver with at least one real diamond.
Rings available in sizes K to S.



Aura Collection

The essential pieces for your everyday style,
with a little twist detail.

All designs are in either rhodium or 18ct gold-plated 925 sterling silver with at least one real diamond.
Rings available in sizes K to S.

NEW



AURA EARRINGS
£85 (DE822)



**AURA HOOP
EARRINGS**
£85 (DE823)



**AURA STUD
EARRINGS**
£85 (DE824)



AURA PENDANT
chain: 16-18" (40-45cm)
£90 (DP1030)



AURA RING
£110 (DR291)

All designs are in either rhodium or 18ct gold-plated 925 sterling silver with at least one real diamond.
Rings available in sizes K to S.

NEW



ILLUMINATE STUD EARRINGS
£80 (DE825)



ILLUMINATE PENDANT
chain: 16-18" (40-45cm)
£110 (DPI031)



ILLUMINATE DROP EARRINGS
£135 (DE826)



ILLUMINATE PENDANT - LARGE
chain: 16-18" (40-45cm)
£135 (DPI032)

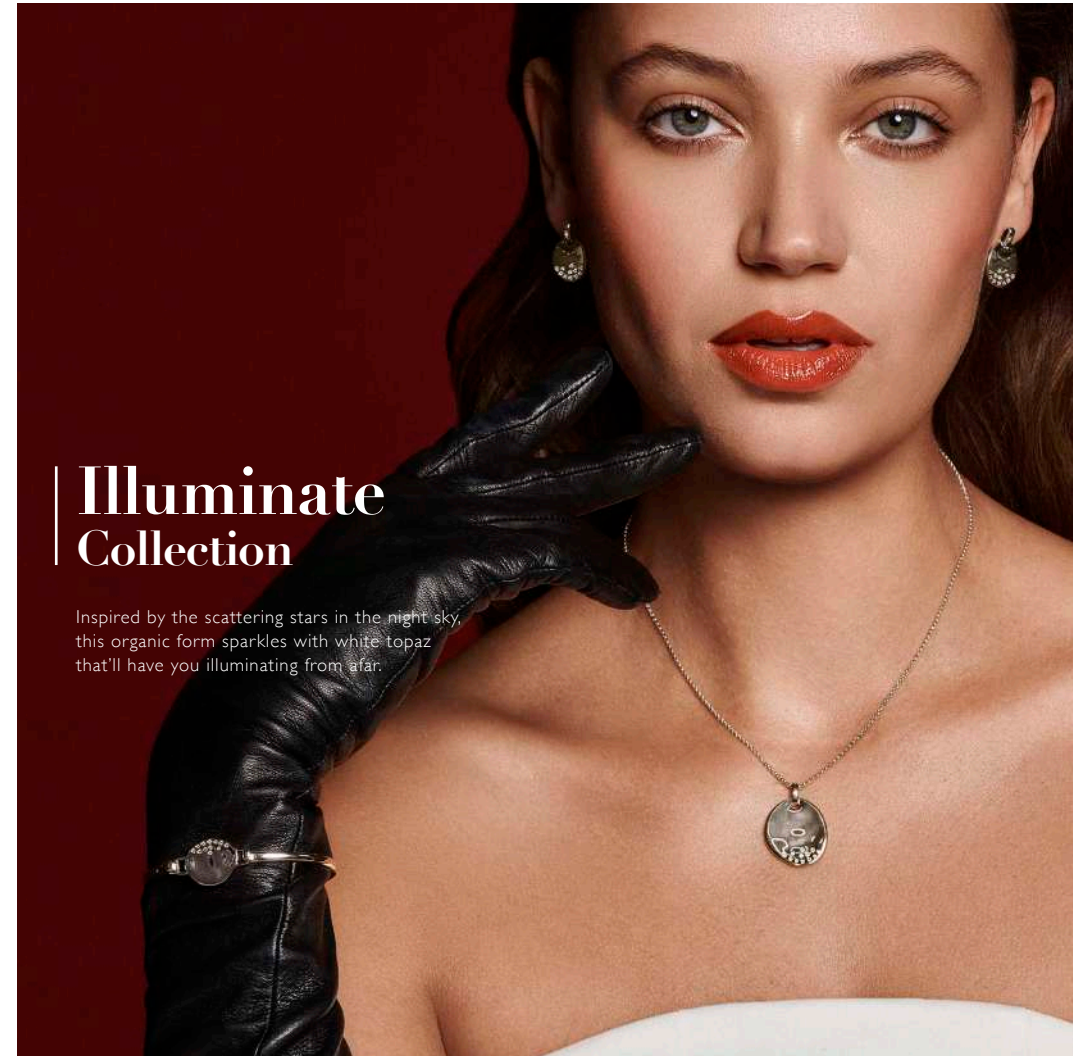


ILLUMINATE BRACELET
£135 (DL697)



ILLUMINATE BANGLE
£210 (DC214)

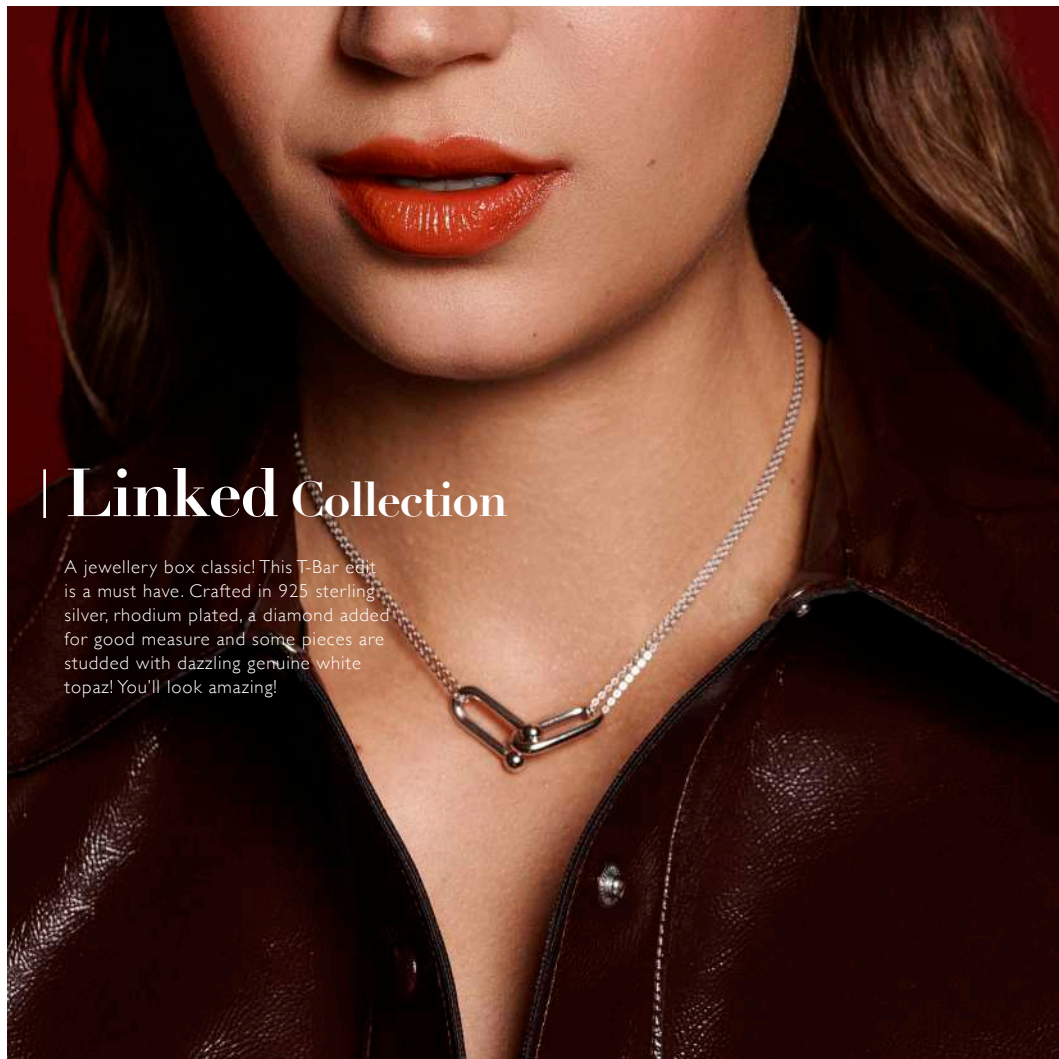
All designs are in either rhodium or 18ct gold-plated 925 sterling silver with at least one real diamond.
Rings available in sizes K to S.



Illuminate Collection

Inspired by the scattering stars in the night sky, this organic form sparkles with white topaz that'll have you illuminating from afar.

All designs are in either rhodium or 18ct gold-plated 925 sterling silver with at least one real diamond.
Rings available in sizes K to S.



| **Linked Collection**

A jewellery box classic! This T-Bar edit is a must have. Crafted in 925 sterling silver, rhodium plated, a diamond added for good measure and some pieces are studded with dazzling genuine white topaz! You'll look amazing!

All designs are in either rhodium or 18ct gold-plated 925 sterling silver with at least one real diamond.
Rings available in sizes K to S.



ICON LINK NECKLACE

chain: 16-18" (40-45cm)

£150 (DN209)

All designs are in either rhodium or 18ct gold-plated 925 sterling silver with at least one real diamond.
Rings available in sizes K to S.



T-BAR NECKLACE
chain: 18" (45cm)
£170 (DN170)



T-BAR BRACELET
£95 (DL653)

All designs are in either rhodium or 18ct gold-plated 925 sterling silver with at least one real diamond.
Rings available in sizes K to S.



All designs are in either rhodium or 18ct gold-plated 925 sterling silver with at least one real diamond.
Rings available in sizes K to S.



Huggies Collection

You can't get more wearable pieces than these.



SOUL EARRINGS
£60 (DE693)



SOUL TWIST EARRINGS
£75 (DE792)



SOUL HUGGIE EARRINGS
£85 (DE793)



SOUL STATEMENT EARRINGS
£110 (DE794)



FLUID EARRINGS
£95 (DE795)

All designs are in either rhodium or 18ct gold-plated 925 sterling silver with at least one real diamond.
Rings available in sizes K to S.

All designs are in either rhodium or 18ct gold-plated 925 sterling silver with at least one real diamond.
Rings available in sizes K to S.

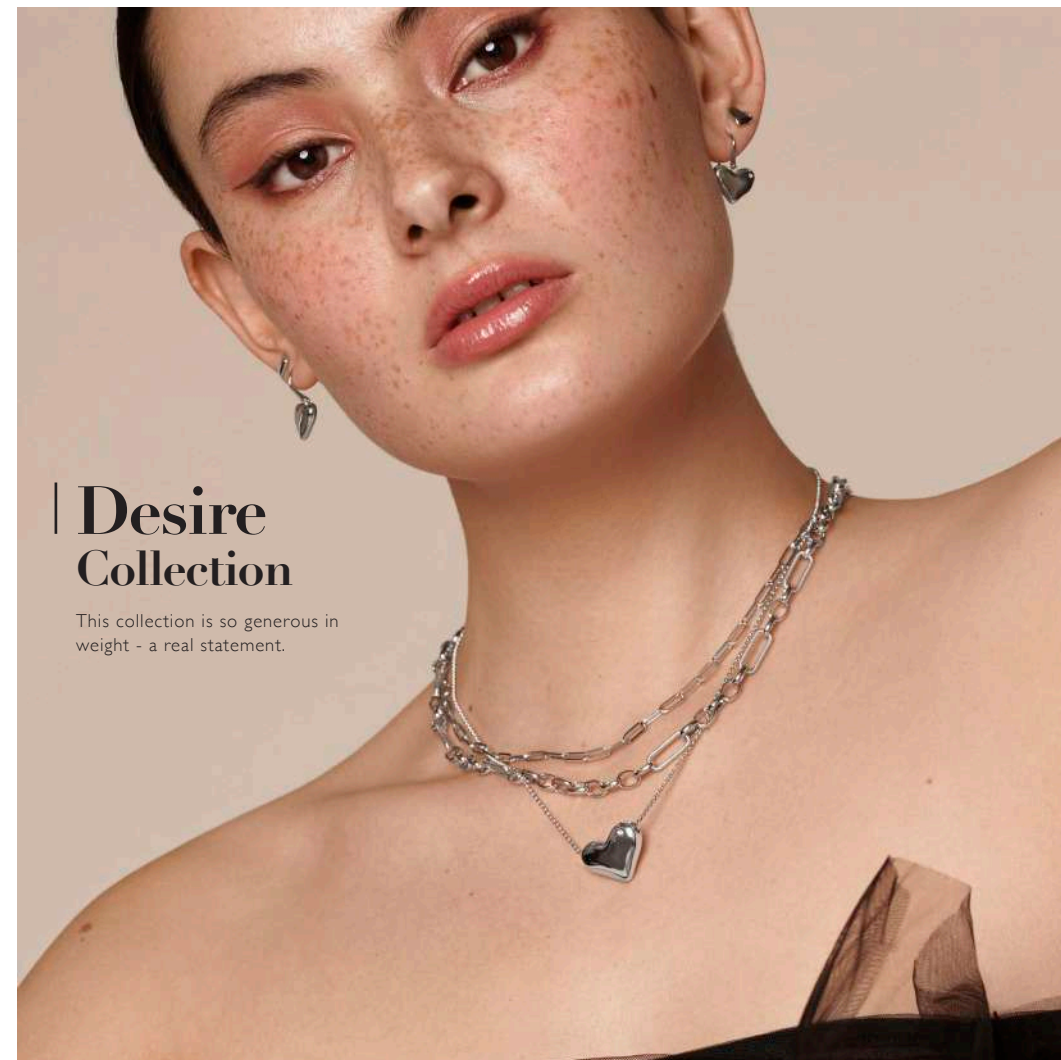


DESIRE PENDANT
chain: 16-18" (40-45cm)
£90 (DP965)



**DESIRE STATEMENT
PENDANT**
chain: 16-18" (40-45cm)
£125 (DP966)

All designs are in either rhodium or 18ct gold-plated 925 sterling silver with at least one real diamond.
Rings available in sizes K to S.



| Desire Collection

This collection is so generous in
weight - a real statement.

All designs are in either rhodium or 18ct gold-plated 925 sterling silver with at least one real diamond.
Rings available in sizes K to S.



**DESIRED HOOK
EARRINGS**
£95 (DE780)



**DESIRE STUD
EARRINGS**
£65 (DE779)



DESIRE BANGLE
£180 (DC185)

All designs are in either rhodium or 18ct gold-plated 925 sterling silver with at least one real diamond.
Rings available in sizes K to S.



**DESIRE STATEMENT
RING**
£80 (DR275)



DESIRE RING
£70 (DR274)

All designs are in either rhodium or 18ct gold-plated 925 sterling silver with at least one real diamond.
Rings available in sizes K to S.



BLOSSOM NECKLACE
chain: 16-18" (40-45cm)
£110 (DNI91)

All designs are in either rhodium or 18ct gold-plated 925 sterling silver with at least one real diamond.
Rings available in sizes K to S.



All designs are in either rhodium or 18ct gold-plated 925 sterling silver with at least one real diamond.
Rings available in sizes K to S.



| Tide Collection

We've fallen in love with the fluid, soft and organic shapes of this collection - it's a real showstopper!

All designs are in either rhodium or 18ct gold-plated 925 sterling silver with at least one real diamond.
Rings available in sizes K to S.



TIDE PENDANT
chain: 16-18" (40-45cm)
£95 (DP997)

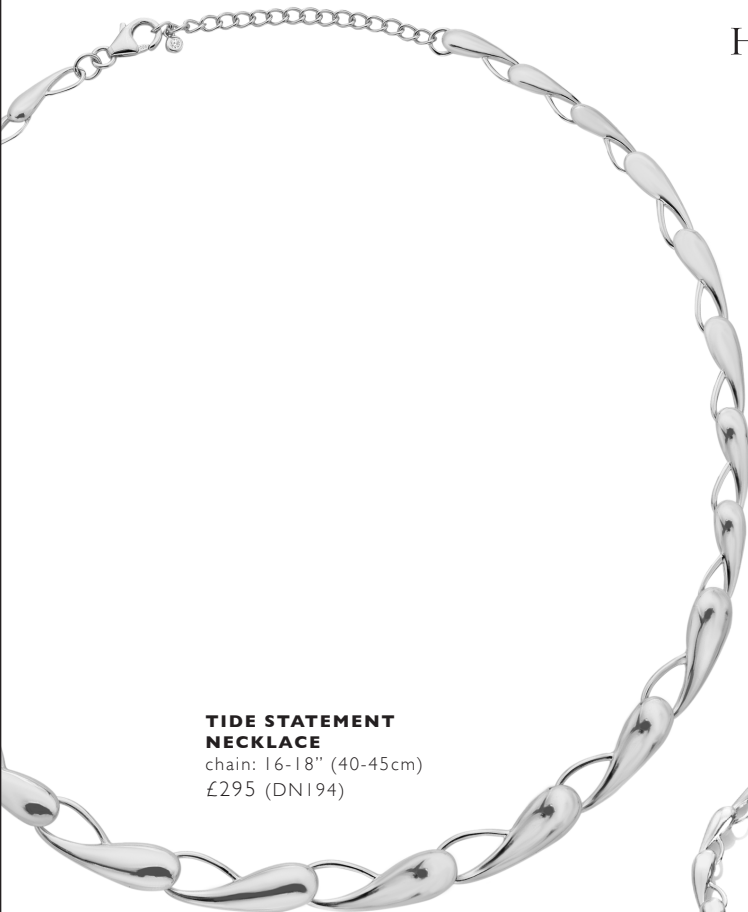


TIDE EARRINGS
£55 (DE786)



TIDE RING
£60 (DR281)

All designs are in either rhodium or 18ct gold-plated 925 sterling silver with at least one real diamond.
Rings available in sizes K to S.

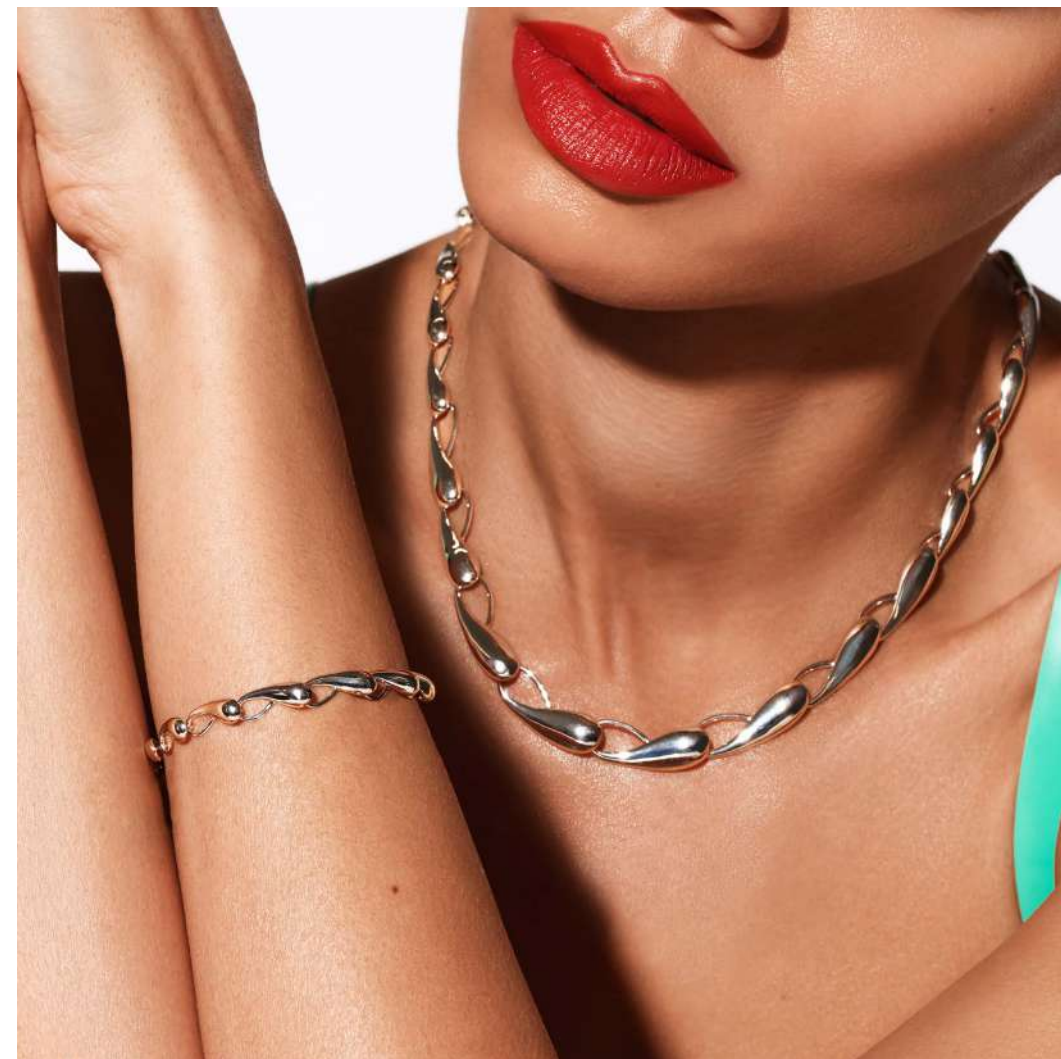


**TIDE STATEMENT
NECKLACE**
chain: 16-18" (40-45cm)
£295 (DN194)

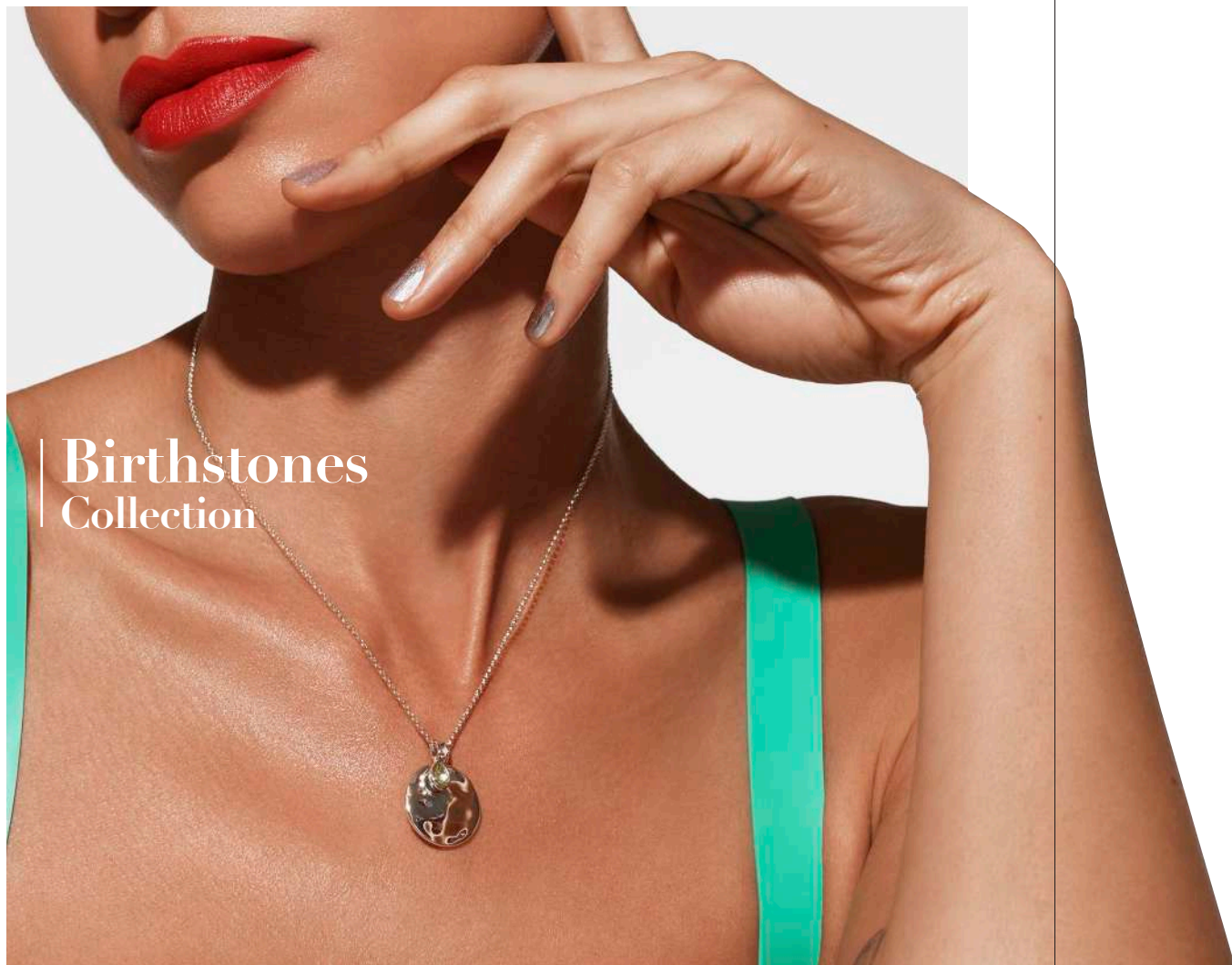


TIDE BRACELET
£140 (DL669)

All designs are in either rhodium or 18ct gold-plated 925 sterling silver with at least one real diamond.
Rings available in sizes K to S.



All designs are in either rhodium or 18ct gold-plated 925 sterling silver with at least one real diamond.
Rings available in sizes K to S.



Birthstones Collection

All designs are in either rhodium or 18ct gold-plated 925 sterling silver with at least one real diamond.
Rings available in sizes K to S.

How it works

Step 1

Select your finishing

If you choose a silver finish, your jewel will be rhodium-plated to prevent tarnishing. If you choose a gold finish, your jewel will be 18 carat gold plated.



Step 2

Select your favourite shape

Choose the shape you love the most. We have circle and teardrop and both are hand-set with a real diamond.



Step 3

Add your birthstone charm

Choose your birthday month and find the matching gemstone. Precious birthstones gems, beautifully framed within a silver teardrop.



All designs are in either rhodium or 18ct gold-plated 925 sterling silver with at least one real diamond.
Rings available in sizes K to S.



**BIRTHSTONE PENDANT -
CIRCLE**
chain: 16-18" (40-45cm)
£85 (DP969)



**BIRTHSTONE PENDANT -
CIRCLE YELLOW GOLD**
chain: 16-18" (40-45cm)
£85 (DP983)



**BIRTHSTONE PENDANT -
TEARDROP**
chain: 16-18" (40-45cm)
£85 (DP970)



**BIRTHSTONE PENDANT -
TEARDROP YELLOW GOLD**
chain: 16-18" (40-45cm)
£85 (DP984)

HOT DIAMONDS / Birthstones



JANUARY BIRTHSTONE
£35 (DP971)



FEBRUARY BIRTHSTONE
£35 (DP972)



MARCH BIRTHSTONE
£35 (DP973)



APRIL BIRTHSTONE
£35 (DP974)



MAY BIRTHSTONE
£35 (DP975)



JUNE BIRTHSTONE
£35 (DP976)



JULY BIRTHSTONE
£35 (DP977)



AUGUST BIRTHSTONE
£35 (DP978)



SEPTEMBER BIRTHSTONE
£35 (DP979)



OCTOBER BIRTHSTONE
£35 (DP980)



NOVEMBER BIRTHSTONE
£35 (DP981)



DECEMBER BIRTHSTONE
£35 (DP982)

All designs are in either rhodium or 18ct gold-plated 925 sterling silver with at least one real diamond.
Rings available in sizes K to S.

HOT DIAMONDS / Birthstones



JULY BIRTHSTONE
£35 (DP977)



AUGUST BIRTHSTONE
£35 (DP978)



SEPTEMBER BIRTHSTONE
£35 (DP979)



OCTOBER BIRTHSTONE
£35 (DP980)



NOVEMBER BIRTHSTONE
£35 (DP981)



DECEMBER BIRTHSTONE
£35 (DP982)

All designs are in either rhodium or 18ct gold-plated 925 sterling silver with at least one real diamond.
Rings available in sizes K to S.

HOT DIAMONDS / Birthstones



JANUARY BIRTHSTONE - YELLOW GOLD
£35 (DP985)



FEBRUARY BIRTHSTONE - YELLOW GOLD
£35 (DP986)



MARCH BIRTHSTONE - YELLOW GOLD
£35 (DP987)



APRIL BIRTHSTONE - YELLOW GOLD
£35 (DP988)



MAY BIRTHSTONE - YELLOW GOLD
£35 (DP989)



JUNE BIRTHSTONE - YELLOW GOLD
£35 (DP990)



JULY BIRTHSTONE - YELLOW GOLD
£35 (DP991)



AUGUST BIRTHSTONE - YELLOW GOLD
£35 (DP992)



SEPTEMBER BIRTHSTONE - YELLOW GOLD
£35 (DP993)



OCTOBER BIRTHSTONE - YELLOW GOLD
£35 (DP994)



NOVEMBER BIRTHSTONE - YELLOW GOLD
£35 (DP995)



DECEMBER BIRTHSTONE - YELLOW GOLD
£35 (DP996)

HOT DIAMONDS / Birthstones



The Tender Collection

Wonderful white topaz gems, symbols of love and affection, encapsulated in sterling silver and hand-set with a real diamond.

All designs are in either rhodium or 18ct gold-plated 925 sterling silver with at least one real diamond.
Rings available in sizes K to S.



TENDER BANGLE
£195 (DC187)

WHITE
TOPAZ



**TENDER STATEMENT
BANGLE**
£195 (DC188)

All designs are in either rhodium or 18ct gold-plated 925 sterling silver with at least one real diamond.
Rings available in sizes K to S.



All designs are in either rhodium or 18ct gold-plated 925 sterling silver with at least one real diamond.
Rings available in sizes K to S.



**WATERFALL
EARRINGS**
£65 (DE748)



**WATERFALL DROP
EARRINGS**
£70 (DE750)



**WATERFALL MARQUISE
DROP EARRINGS**
£70 (DE751)

All designs are in either rhodium or 18ct gold-plated 925 sterling silver with at least one real diamond.
Rings available in sizes K to S.



WATERFALL STATEMENT NECKLACE
chain: 16-18" (40-45cm)
£120 (DN175)



WATERFALL NECKLACE
chain: 16-18" (40-45cm)
£95 (DN176)



WATERFALL MARQUISE NECKLACE
chain: 16-18" (40-45cm)
£95 (DN177)





**WHITE TOPAZ
SOLITAIRE NECKLACE**
chain: 16-18" (40-45cm)
£85 (DN167)



**WHITE TOPAZ
SOLITAIRE EARRINGS**
£70 (DE728)

All designs are in either rhodium or 18ct gold-plated 925 sterling silver with at least one real diamond.
Rings available in sizes K to S.



All designs are in either rhodium or 18ct gold-plated 925 sterling silver with at least one real diamond.
Rings available in sizes K to S.



NECKLACE
chain: 16-18" (40-45cm)
£75 (DN147)

WHITE
TOPAZ



EARRINGS
£50 (DE640)



**STATEMENT
EARRINGS**
£70 (DE641)

All designs are in either rhodium or 18ct gold-plated 925 sterling silver with at least one real diamond.
Rings available in sizes K to S.



All designs are in either rhodium or 18ct gold-plated 925 sterling silver with at least one real diamond.
Rings available in sizes K to S.



All designs are in either rhodium or 18ct gold-plated 925 sterling silver with at least one real diamond.
Rings available in sizes K to S.



**WHITE TOPAZ
BRACELET**
£80 (DL581)



**WHITE TOPAZ
NECKLACE**
chain: 16-18" (40-45cm)
£85 (DNI29)



**WHITE TOPAZ
INTERMITTENT BRACELET**
£75 (DL580)

All designs are in either rhodium or 18ct gold-plated 925 sterling silver with at least one real diamond.
Rings available in sizes K to S.

HOT DIAMONDS / Tender



SOLITAIRE RING
£50 (DR206)



**WHITE TOPAZ EARRINGS
- TRIPLE DROP**
£55 (DE585)



STATEMENT RING
£75 (DR207)



RING
£70 (DR208)

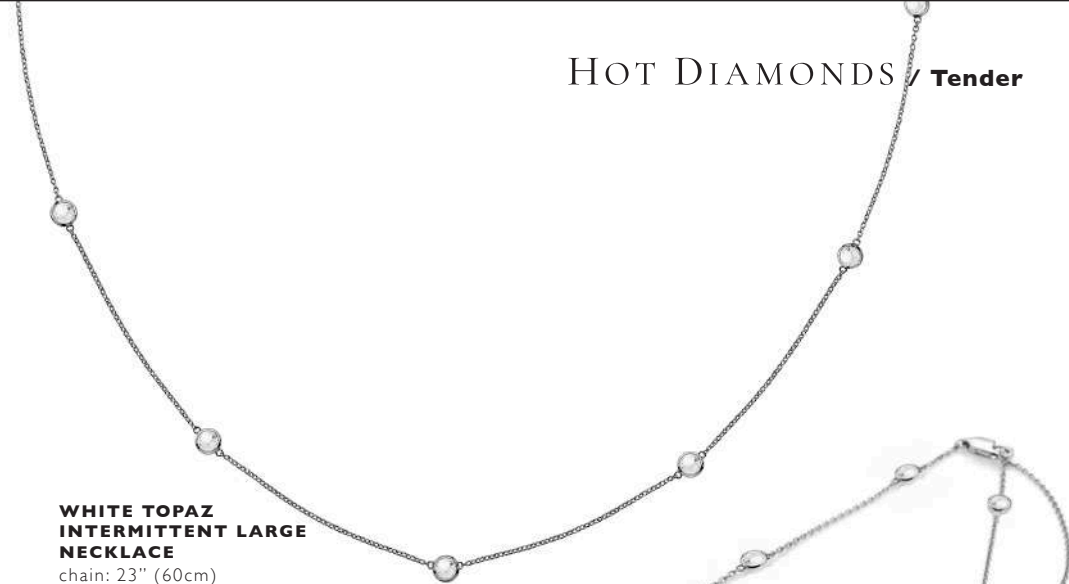


**WHITE TOPAZ EARRINGS
- DOUBLE DROP**
£50 (DE586)

WHITE
TOPAZ

All designs are in either rhodium or 18ct gold-plated 925 sterling silver with at least one real diamond.
Rings available in sizes K to S.

HOT DIAMONDS / Tender



**WHITE TOPAZ
INTERMITTENT LARGE
NECKLACE**
chain: 23" (60cm)
£130 (DNI31)

WHITE
TOPAZ



**WHITE TOPAZ
EARRINGS**
£45 (DE584)



**WHITE TOPAZ
INTERMITTENT NECKLACE**
chain: 18" (45cm)
£110 (DNI30)

All designs are in either rhodium or 18ct gold-plated 925 sterling silver with at least one real diamond.
Rings available in sizes K to S.



Mother of Pearl Collection

Mother of Pearls organic lustre sets off this shows topping collection, encased with a Sterling Silver beaded edge for a contemporary feel.

All designs are in either rhodium or 18ct gold-plated 925 sterling silver with at least one real diamond.
Rings available in sizes K to S.



CIRCLE EARRINGS
£75 (DE740)

CIRCLE PENDANT
chain: 16-18" (40-45cm)
£95 (DP922)



CIRCLE RING
£80 (DR258)

All designs are in either rhodium or 18ct gold-plated 925 sterling silver with at least one real diamond.
Rings available in sizes K to S.



FLOURISH EARRINGS
£135 (DE742)



FLOURISH PENDANT
chain: 16-18" (40-45cm)
£120 (DP927)

All designs are in either rhodium or 18ct gold-plated 925 sterling silver with at least one real diamond.
Rings available in sizes K to S.



Flourish Collection

Soft elegant curves create a classic form adorned with four diamonds for that extra sparkle.

All designs are in either rhodium or 18ct gold-plated 925 sterling silver with at least one real diamond.
Rings available in sizes K to S.



PENDANT
chain: 16-18" (40-45cm)
£95 (DP929)



DROP EARRINGS
£110 (DE744)



BRACELET
£90 (DL661)

WHITE
TOPAZ



RING
£85 (DR259)

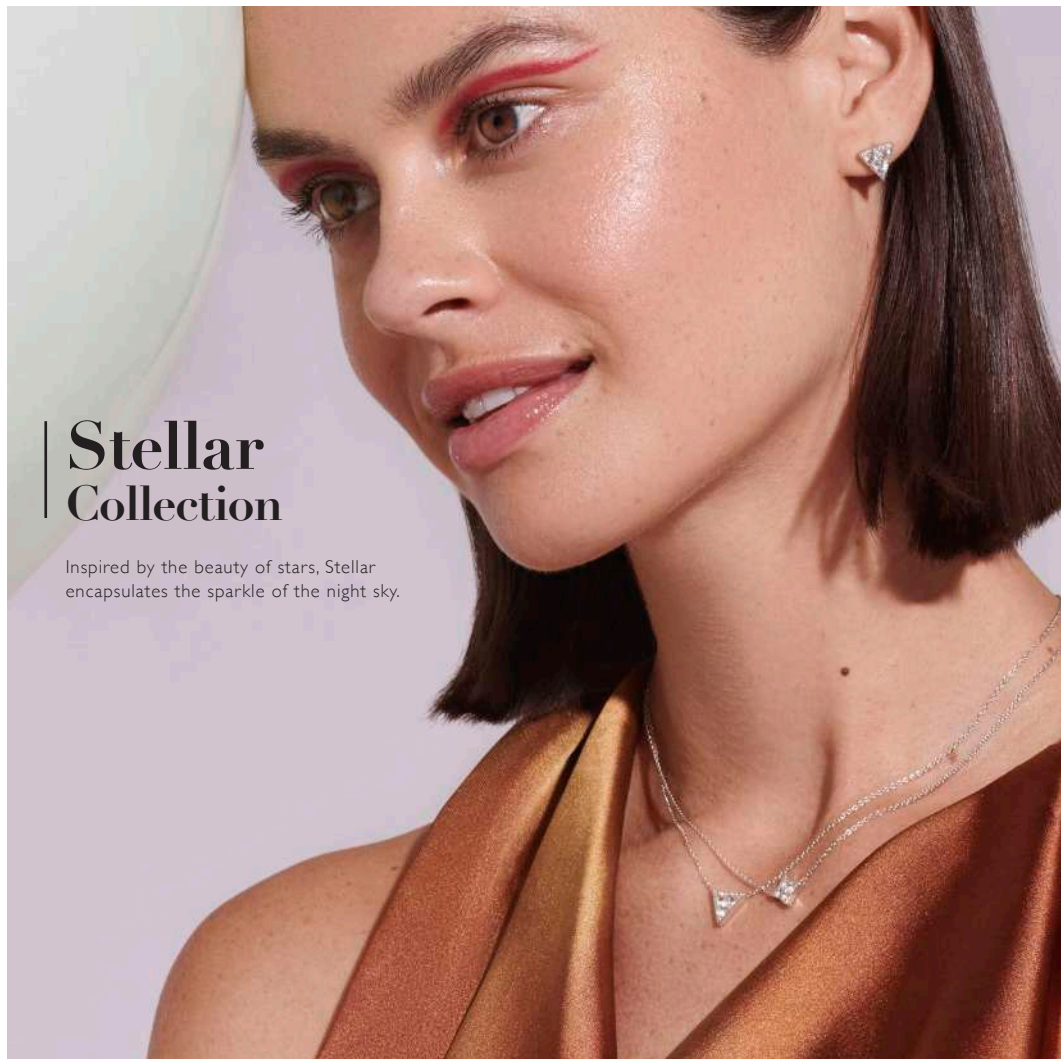
All designs are in either rhodium or 18ct gold-plated 925 sterling silver with at least one real diamond.
Rings available in sizes K to S.



Orbit Collection

Sparkly details are our thing, featuring a bright white topaz stone set in the centre surrounded by more bright white topaz stones.

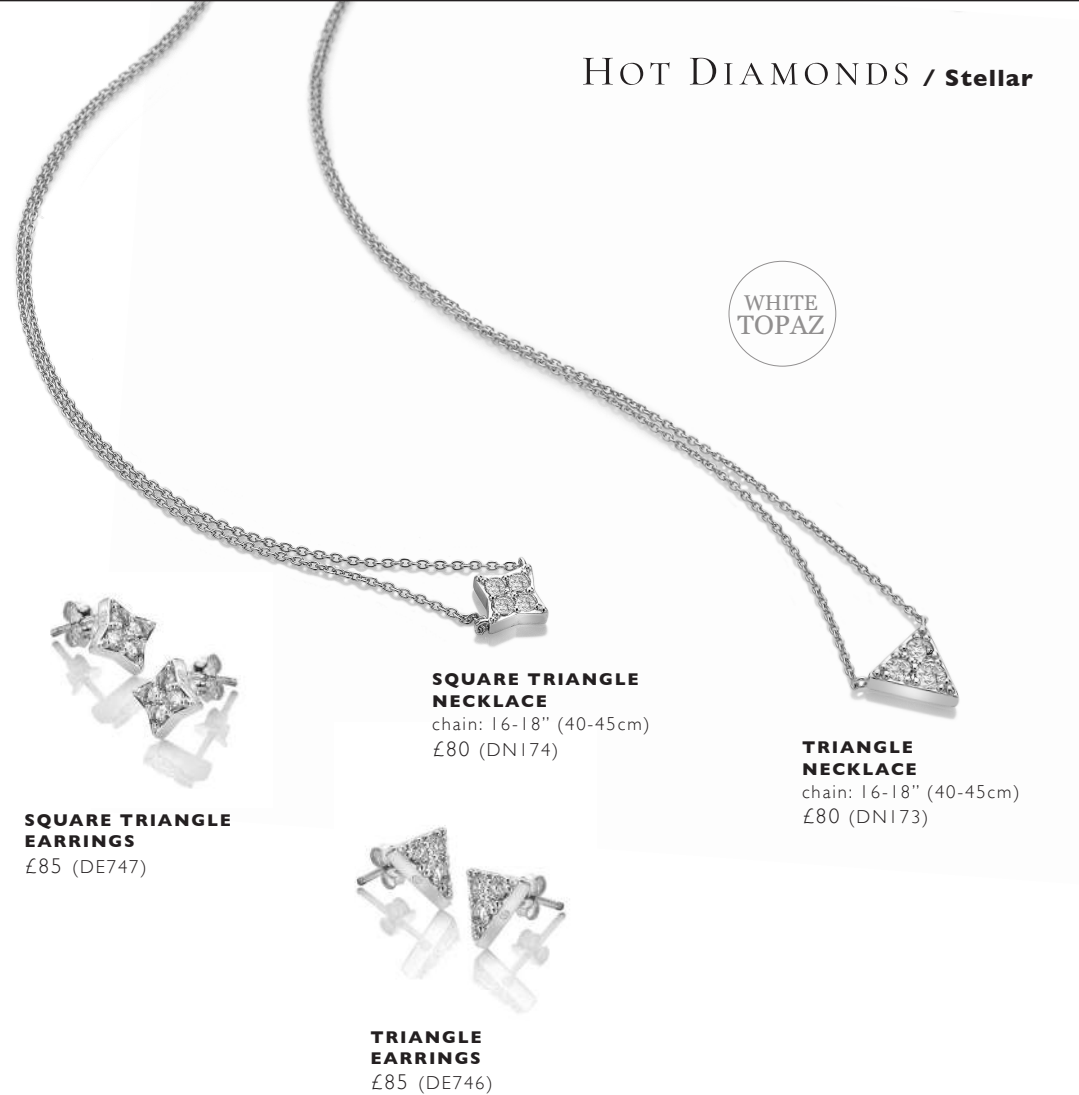
All designs are in either rhodium or 18ct gold-plated 925 sterling silver with at least one real diamond.
Rings available in sizes K to S.



Stellar Collection

Inspired by the beauty of stars, Stellar encapsulates the sparkle of the night sky.

All designs are in either rhodium or 18ct gold-plated 925 sterling silver with at least one real diamond.
Rings available in sizes K to S.



WHITE
TOPAZ

SQUARE TRIANGLE NECKLACE

chain: 16-18" (40-45cm)
£80 (DN174)

TRIANGLE NECKLACE

chain: 16-18" (40-45cm)
£80 (DN173)

SQUARE TRIANGLE EARRINGS

£85 (DE747)

TRIANGLE EARRINGS

£85 (DE746)

All designs are in either rhodium or 18ct gold-plated 925 sterling silver with at least one real diamond.
Rings available in sizes K to S.



PENDANT
chain: 16-18" (40-45cm)
£110 (DP930)



EARRINGS
£80 (DE763)

All designs are in either rhodium or 18ct gold-plated 925 sterling silver with at least one real diamond.
Rings available in sizes K to S.



Sunbeam Collection

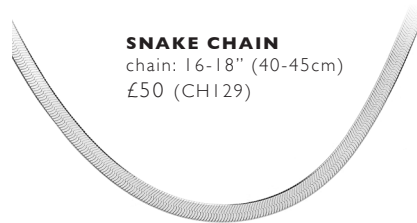
A diamond adorns the sculptural ridges of this collection.

All designs are in either rhodium or 18ct gold-plated 925 sterling silver with at least one real diamond.
Rings available in sizes K to S.

HOT DIAMONDS / Chains



PAPERCLIP CHAIN
chain: 16-18" (40-45cm)
£60 (CHI28)



SNAKE CHAIN
chain: 16-18" (40-45cm)
£50 (CHI29)



INTERMITTENT OVAL CHAIN
chain: 16-18" (40-45cm)
£45 (CHI25)

All designs are in either rhodium or 18ct gold-plated 925 sterling silver with at least one real diamond.
Rings available in sizes K to S.



Chain Necklaces

Layers, layers and more layers!

All designs are in either rhodium or 18ct gold-plated 925 sterling silver with at least one real diamond.
Rings available in sizes K to S.



**INTERMITTENT BEAD
CABLE CHAIN CHOKER**
chain: 32-39cm
£30 (CH123)



**DIAMOND CUT OVAL
CHAIN**
chain: 16-18" (40-45cm)
£40 (CH126)

All designs are in either rhodium or 18ct gold-plated 925 sterling silver with at least one real diamond.
Rings available in sizes K to S.



**MULTI-LINK
PAPERCLIP CHAIN**
chain: 16-18" (40-45cm)
£60 (CH127)

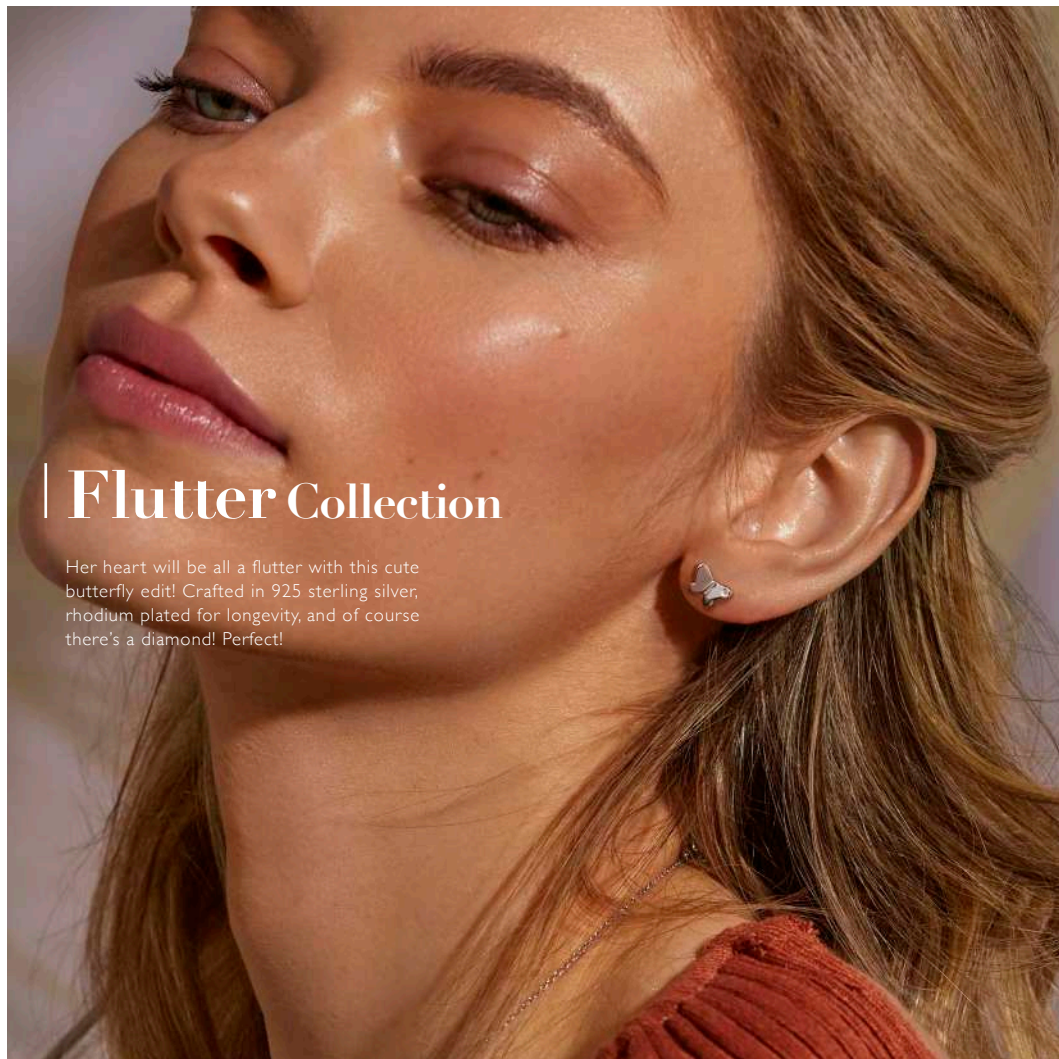


**STATEMENT
LINK CHAIN**
chain: 16-18" (40-45cm)
£150 (CH130)

All designs are in either rhodium or 18ct gold-plated 925 sterling silver with at least one real diamond.
Rings available in sizes K to S.



**'STORYTELLER' STERLING
SILVER BOX CHAIN**
chain: 16-18" (40-45cm)
£15 (CH031)



Flutter Collection

Her heart will be all a flutter with this cute butterfly edit! Crafted in 925 sterling silver, rhodium plated for longevity, and of course there's a diamond! Perfect!

All designs are in either rhodium or 18ct gold-plated 925 sterling silver with at least one real diamond.
Rings available in sizes K to S.



PENDANT
chain: 16-18" (40-45cm)
£60 (DP911)



STUD EARRINGS
£50 (DE732)



STATEMENT PENDANT
chain: 16-18" (40-45cm)
£65 (DP912)

All designs are in either rhodium or 18ct gold-plated 925 sterling silver with at least one real diamond.
Rings available in sizes K to S.

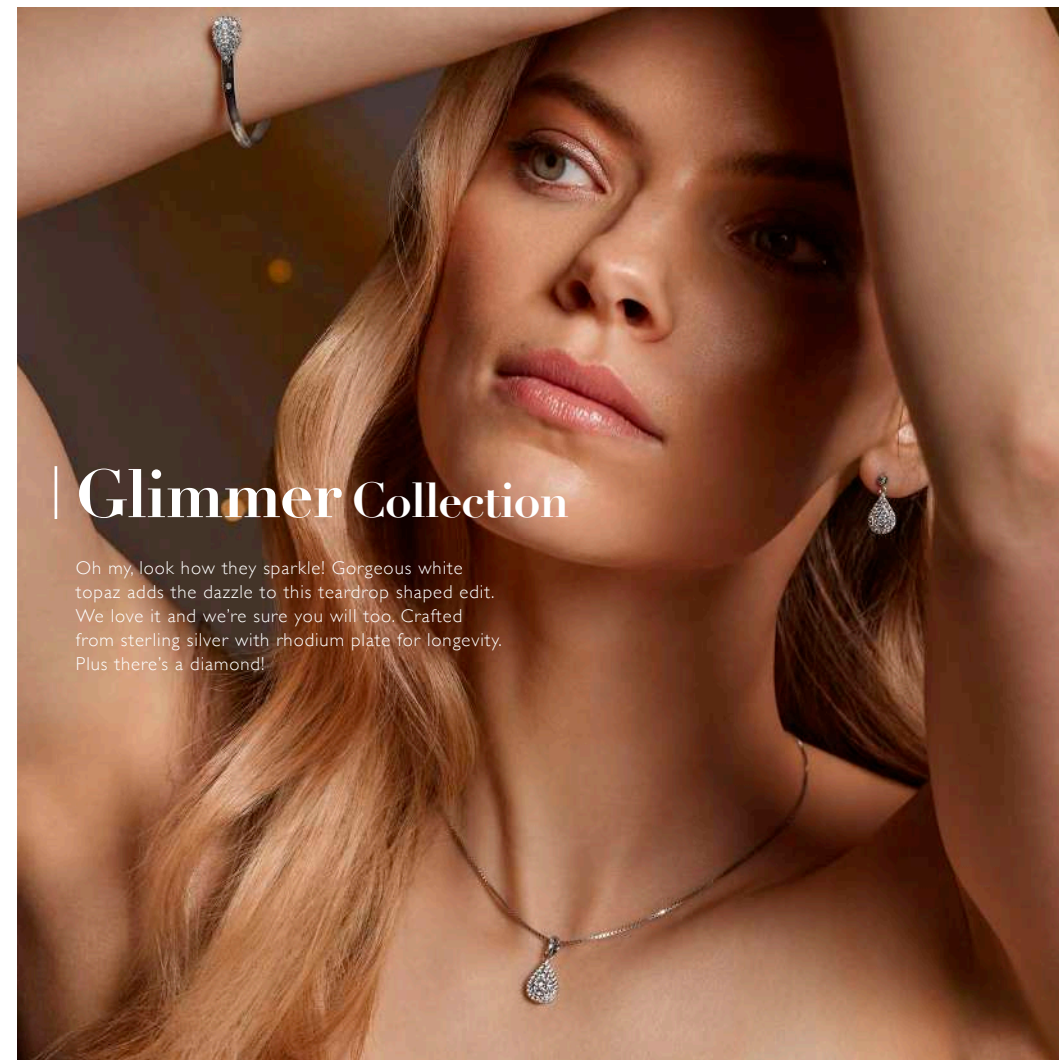


**WHITE TOPAZ
BANGLE**
£185 (DC179)



**WHITE TOPAZ
EARRINGS**
£125 (DE735)

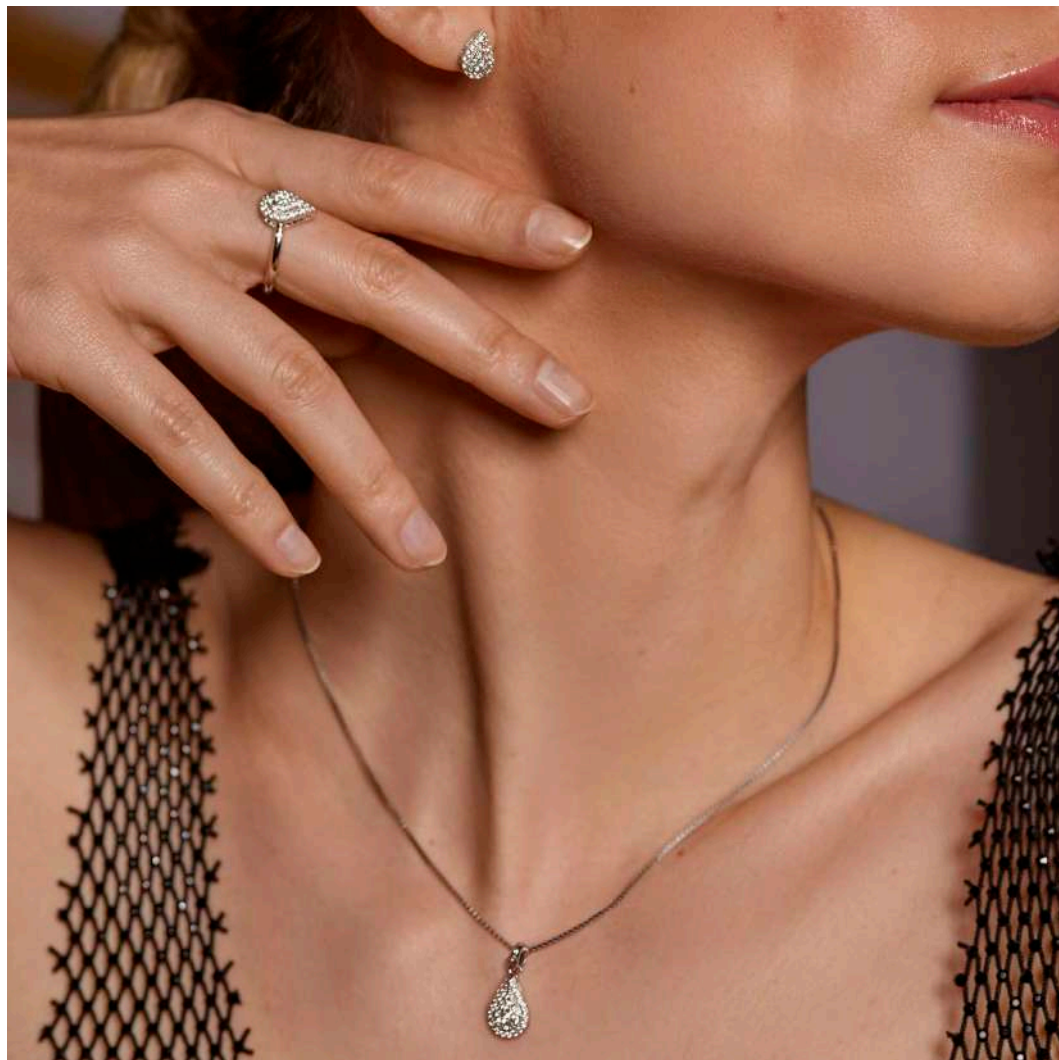
All designs are in either rhodium or 18ct gold-plated 925 sterling silver with at least one real diamond.
Rings available in sizes K to S.



Glimmer Collection

Oh my, look how they sparkle! Gorgeous white topaz adds the dazzle to this teardrop shaped edit. We love it and we're sure you will too. Crafted from sterling silver with rhodium plate for longevity. Plus there's a diamond!

All designs are in either rhodium or 18ct gold-plated 925 sterling silver with at least one real diamond.
Rings available in sizes K to S.



All designs are in either rhodium or 18ct gold-plated 925 sterling silver with at least one real diamond.
Rings available in sizes K to S.



**WHITE TOPAZ STUD
EARRINGS**
£90 (DE736)



**WHITE TOPAZ
PENDANT**
chain: 16-18" (40-45cm)
£110 (DP913)



WHITE TOPAZ RING
£85 (DR255)

All designs are in either rhodium or 18ct gold-plated 925 sterling silver with at least one real diamond.
Rings available in sizes K to S.



The Most-Loved Collection

Journey back through time with a collection of our most-loved silver and diamond creations from years gone by.

All designs are in either rhodium or 18ct gold-plated 925 sterling silver with at least one real diamond.
Rings available in sizes K to S.



CROSS PENDANT
chain: 16-18" (40-45cm)
£95 (DP105)

All designs are in either rhodium or 18ct gold-plated 925 sterling silver with at least one real diamond.
Rings available in sizes K to S.

HOT DIAMONDS / **Most-loved**



All designs are in either rhodium or 18ct gold-plated 925 sterling silver with at least one real diamond.
Rings available in sizes K to S.

HOT DIAMONDS / **Most-loved**



TEARDROP EARRINGS
£80 (DE729)



TEARDROP PENDANT
chain: 16-18" (40-45cm)
£85 (DP908)



MOST LOVED BANGLE
£195 (DC178)

All designs are in either rhodium or 18ct gold-plated 925 sterling silver with at least one real diamond.
Rings available in sizes K to S.

HOT DIAMONDS / **Most-loved**



RIBBON EARRINGS
£80 (DE730)



RIBBON PENDANT
chain: 16-18" (40-45cm)
£85 (DP909)

All designs are in either rhodium or 18ct gold-plated 925 sterling silver with at least one real diamond.
Rings available in sizes K to S.

HOT DIAMONDS / **Most-loved**



INFINITY PENDANT
chain: 16-18" (40-45cm)
£75 (DP910)

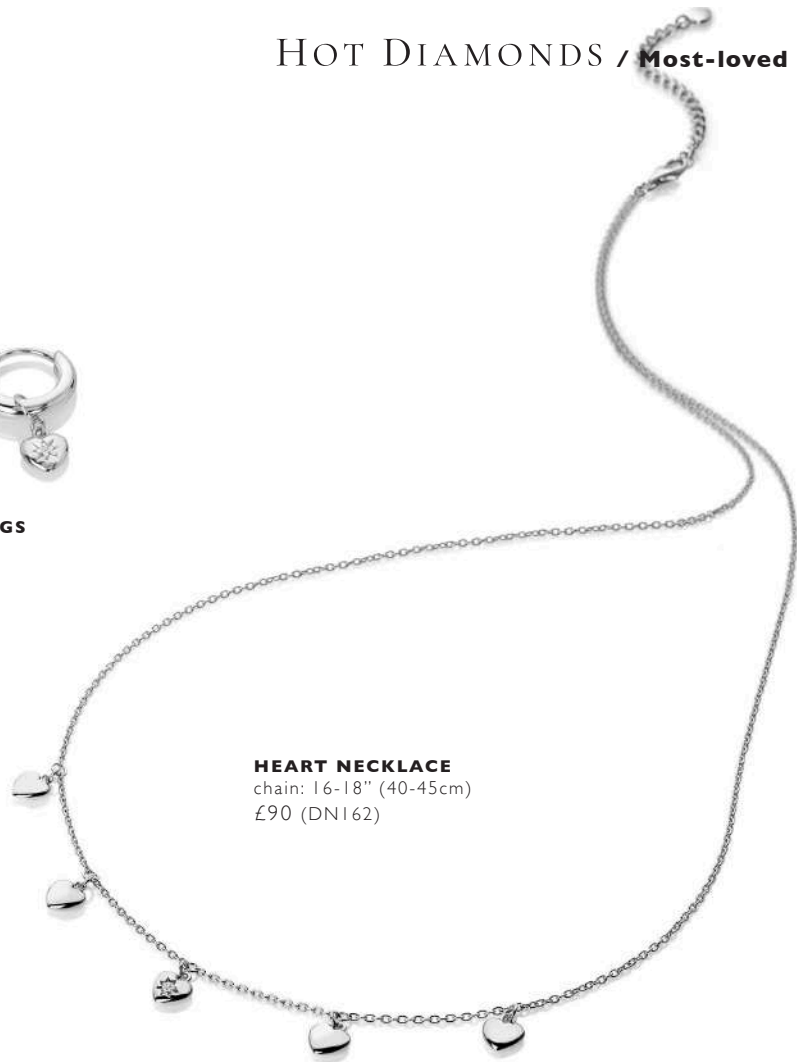


INFINITY EARRINGS
£80 (DE731)

All designs are in either rhodium or 18ct gold-plated 925 sterling silver with at least one real diamond.
Rings available in sizes K to S.



HEART EARRINGS
£60 (DE718)



HEART NECKLACE
chain: 16-18" (40-45cm)
£90 (DNI62)

All designs are in either rhodium or 18ct gold-plated 925 sterling silver with at least one real diamond.
Rings available in sizes K to S.



All designs are in either rhodium or 18ct gold-plated 925 sterling silver with at least one real diamond.
Rings available in sizes K to S.



All designs are in either rhodium or 18ct gold-plated 925 sterling silver with at least one real diamond.
Rings available in sizes K to S.



STAR NECKLACE
chain: 16-18" (40-45cm)
£90 (DNI63)

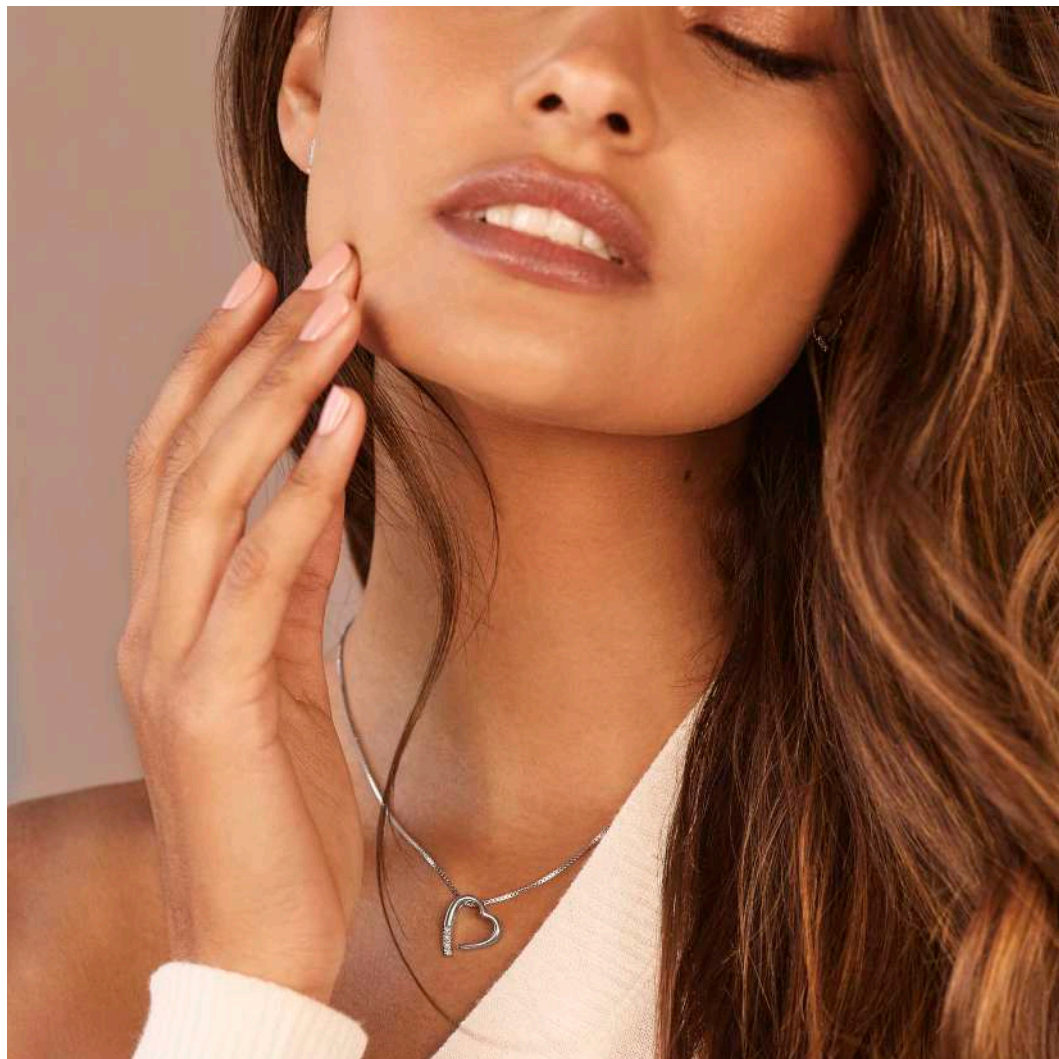


STAR EARRINGS
£60 (DE719)



STAR RING
£50 (DR242)

All designs are in either rhodium or 18ct gold-plated 925 sterling silver with at least one real diamond.
Rings available in sizes K to S.



All designs are in either rhodium or 18ct gold-plated 925 sterling silver with at least one real diamond.
Rings available in sizes K to S.



ROMANTIC PENDANT
chain: 16-18" (40-45cm)
£85 (DPI100)



ROMANTIC EARRINGS
£65 (DE110)

All designs are in either rhodium or 18ct gold-plated 925 sterling silver with at least one real diamond.
Rings available in sizes K to S.



SURE EARRINGS
£70 (DE546)



ELEGANT PENDANT
chain: 16-18" (40-45cm)
£80 (DP687)



GLAMOROUS PENDANT
chain: 18-22" (45-55cm)
£125 (DP651)



GLAMOROUS DROP EARRINGS
£95 (DE496)



WHITE
TOPAZ

ENCHANTING EARRINGS
£60 (DE548)

ENCHANTING PENDANT
chain: 16-18" (40-45cm)
£110 (DP691)

All designs are in either rhodium or 18ct gold-plated 925 sterling silver with at least one real diamond.
Rings available in sizes K to S.



All designs are in either rhodium or 18ct gold-plated 925 sterling silver with at least one real diamond.
Rings available in sizes K to S.



All designs are in either rhodium or 18ct gold-plated 925 sterling silver with at least one real diamond.
Rings available in sizes K to S.



WARM PENDANT
chain: 16-18" (40-45cm)
£85 (DP660)



WARM EARRINGS
£65 (DE532)



WARM BRACELET
£95 (DL564)

All designs are in either rhodium or 18ct gold-plated 925 sterling silver with at least one real diamond.
Rings available in sizes K to S.



SENSUAL PENDANT
chain: 16-18" (40-45cm)
£95 (DP197)



SENSUAL EARRINGS
£65 (DE221)



YOUTHFUL NECKLACE
chain: 24" (61cm)
£110 (DN116)

TWIST RING
£75 (DR238)



CHARM BRACELET
£40 (DL061)



SURE BRACELET
£110 (DL003)

All designs are in either rhodium or 18ct gold-plated 925 sterling silver with at least one real diamond.
Rings available in sizes K to S.



CLASSIC CHARM BRACELET
£40 (DL062)



STATEMENT CHARM BRACELET
£80 (DL071)

All designs are in either rhodium or 18ct gold-plated 925 sterling silver with at least one real diamond.
Rings available in sizes K to S.



Reflect Collection

A now for something a little different. A new, beautiful form has joined the Hot Diamonds array of jewels and we adore it! It's contemporary, yet so wearable. We're wearing ours day and night - why don't you join us? You'll look amazing!

All designs are in either rhodium or 18ct gold-plated 925 sterling silver with at least one real diamond.
Rings available in sizes K to S.



**STATEMENT
EARRINGS**
£80 (DE715)



NECKLACE
chain: 16-18" (40-45cm)
£80 (DN159)

All designs are in either rhodium or 18ct gold-plated 925 sterling silver with at least one real diamond.
Rings available in sizes K to S.



DROP EARRINGS
£95 (DE716)

WHITE
TOPAZ



PENDANT
chain: 16-18" (40-45cm)
£95 (DP898)



WHITE TOPAZ BRACELET
£95 (DL648)

All designs are in either rhodium or 18ct gold-plated 925 sterling silver with at least one real diamond.
Rings available in sizes K to S.



Echo Collection

Our Echo collection is a celebration of balance. Each side of this design is a perfect echo of the opposite side and so we decided to call it, well, 'Echo'. See what we've done there? "What makes it sparkle so?" We hear you say. Well, its set with natural white topaz gems and of course a hand-set real diamond. Love it!

All designs are in either rhodium or 18ct gold-plated 925 sterling silver with at least one real diamond.
Rings available in sizes K to S.



All designs are in either rhodium or 18ct gold-plated 925 sterling silver with at least one real diamond.
Rings available in sizes K to S.



RING
£90 (DR240)



EARRINGS
£60 (DE717)

WHITE
TOPAZ



BANGLE
£195 (DC173)

All designs are in either rhodium or 18ct gold-plated 925 sterling silver with at least one real diamond.
Rings available in sizes K to S.



**WHITE TOPAZ
EARRINGS**
£70 (DE720)



**WHITE TOPAZ
NECKLACE**
chain: 16-18" (40-45cm)
£150 (DNI64)



**WHITE TOPAZ
BRACELET**
£120 (DL649)

All designs are in either rhodium or 18ct gold-plated 925 sterling silver with at least one real diamond.
Rings available in sizes K to S.



The Balance Collection

We love our new balance collection. It's statement and everyday at the same time. We're playing with polished finishes alongside natural white topaz, and we love the results. Is there a hand-set diamond in this fabulous design? Well, naturally.

All designs are in either rhodium or 18ct gold-plated 925 sterling silver with at least one real diamond.
Rings available in sizes K to S.



**WHITE TOPAZ
EARRINGS**
£80 (DE724)



**WHITE TOPAZ
PENDANT**
chain: 16-18" (40-45cm)
£160 (DP901)



**WHITE TOPAZ
BANGLE**
£195 (DC176)



WHITE TOPAZ RING
£85 (DR245)

All designs are in either rhodium or 18ct gold-plated 925 sterling silver with at least one real diamond.
Rings available in sizes K to S.



The Forever Collection

A celebration of never-ending love and devotion
adorned with a hand-set diamond.

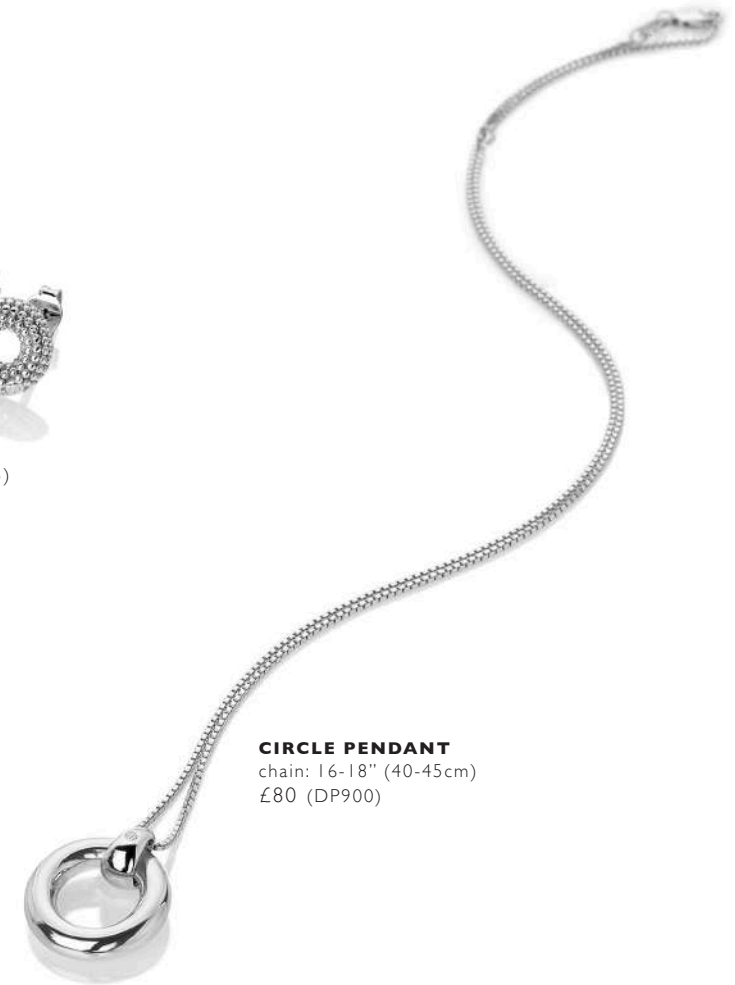
All designs are in either rhodium or 18ct gold-plated 925 sterling silver with at least one real diamond.
Rings available in sizes K to S.



All designs are in either rhodium or 18ct gold-plated 925 sterling silver with at least one real diamond.
Rings available in sizes K to S.



EARRINGS
£65 (DE725)



CIRCLE PENDANT
chain: 16-18" (40-45cm)
£80 (DP900)

All designs are in either rhodium or 18ct gold-plated 925 sterling silver with at least one real diamond.
Rings available in sizes K to S.



All designs are in either rhodium or 18ct gold-plated 925 sterling silver with at least one real diamond.
Rings available in sizes K to S.



FRESH NECKLACE
chain: 18" (45cm)
£95 (DN096)



FRESH EARRINGS
£55 (DE390)

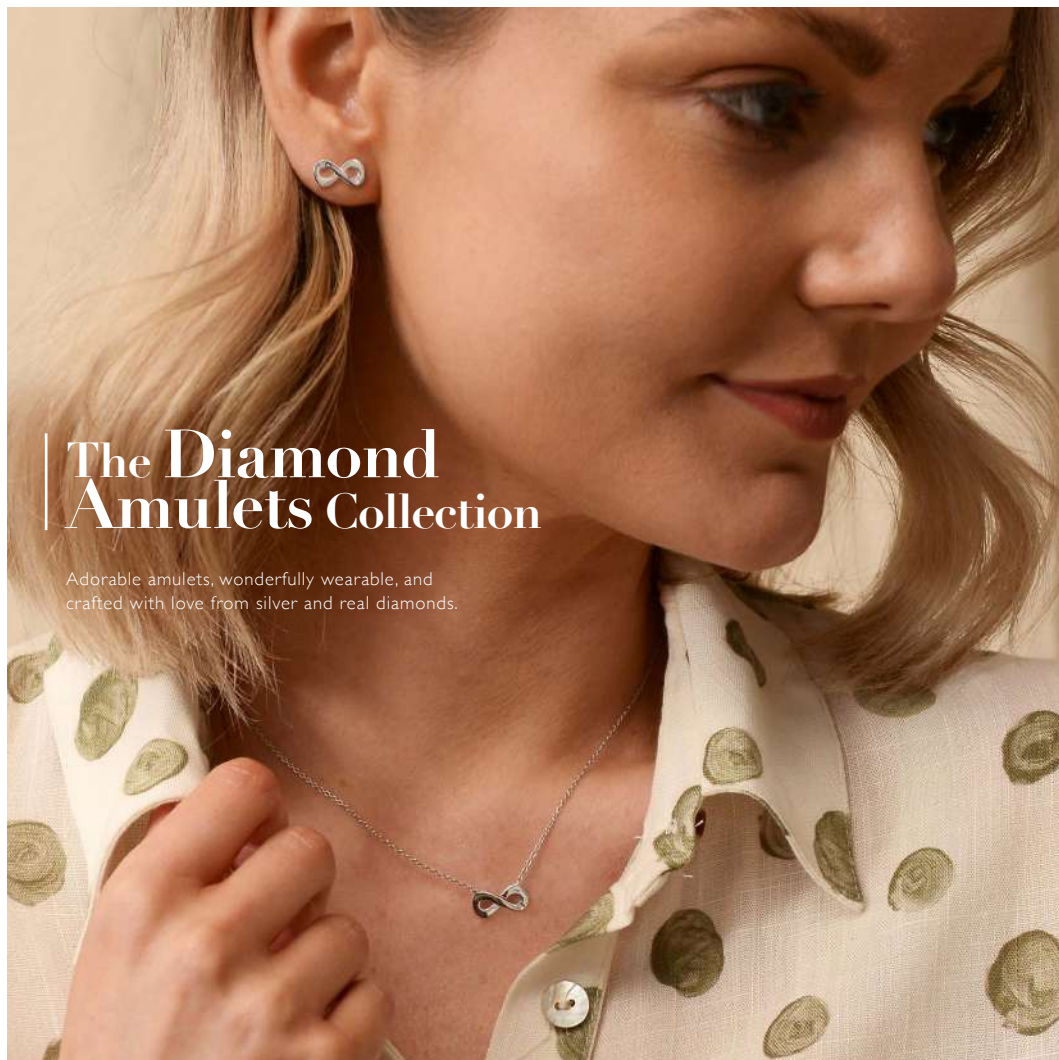


INFINITY RING
£50 (DR144)



FRESH BRACELET
£95 (DL293)

All designs are in either rhodium or 18ct gold-plated 925 sterling silver with at least one real diamond.
Rings available in sizes K to S.



The Diamond Amulets Collection

Adorable amulets, wonderfully wearable, and crafted with love from silver and real diamonds.

All designs are in either rhodium or 18ct gold-plated 925 sterling silver with at least one real diamond. Rings available in sizes K to S.



CIRCLE PENDANT
chain: 16-18" (40-45cm)
£45 (DP892)



INFINITY PENDANT
chain: 16-18" (40-45cm)
£45 (DP893)



FLOWER PENDANT
chain: 16-18" (40-45cm)
£45 (DP894)



PEARL PENDANT
chain: 16-18" (40-45cm)
£45 (DP895)



CIRCLE EARRINGS
£35 (DE709)



INFINITY EARRINGS
£35 (DE710)



FLOWER EARRINGS
£35 (DE711)



PEARL EARRINGS
£35 (DE712)

All designs are in either rhodium or 18ct gold-plated 925 sterling silver with at least one real diamond. Rings available in sizes K to S.

HOT DIAMONDS / Diamond amulets



HEART PENDANT
chain: 16-18" (40-45cm)
£45 (DP747)



TEARDROP PENDANT
chain: 16-18" (40-45cm)
£45 (DP746)



CRESCENT PENDANT
chain: 16-18" (40-45cm)
£45 (DP723)



EARRINGS
£35 (DE616)



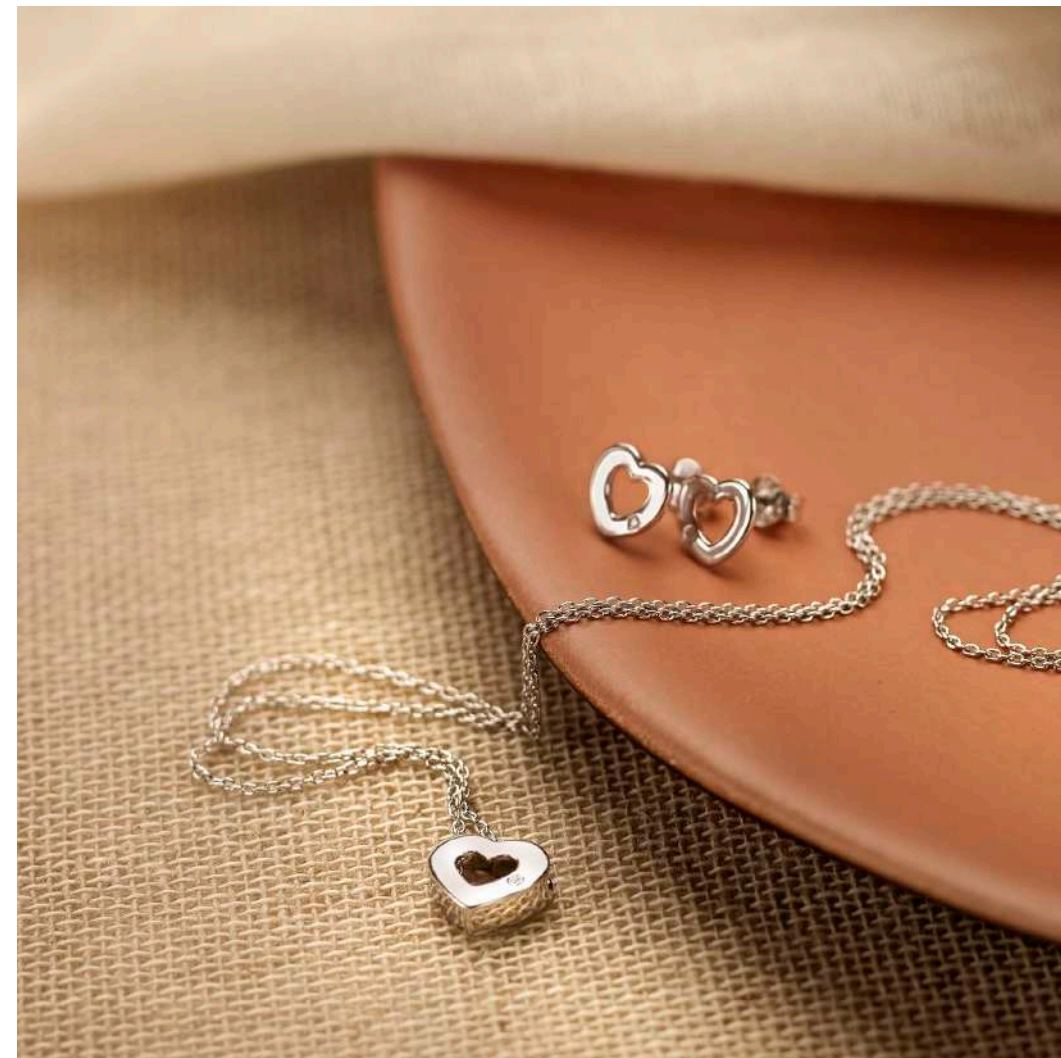
TEARDROP EARRINGS
£35 (DE615)



CRESCENT EARRINGS
£35 (DE588)

All designs are in either rhodium or 18ct gold-plated 925 sterling silver with at least one real diamond.
Rings available in sizes K to S.

HOT DIAMONDS / Diamond amulets



All designs are in either rhodium or 18ct gold-plated 925 sterling silver with at least one real diamond.
Rings available in sizes K to S.



STAR PENDANT
chain: 16-18" (40-45cm)
£45 (DP722)



STAR EARRINGS
£35 (DE587)



STAR SET
chain: 16-18" (40-45cm)
£70 (SS132)



TEARDROP SET
chain: 16-18" (40-45cm)
£70 (SS135)



HEART SET
chain: 16-18" (40-45cm)
£70 (SS136)



INFINITY SET
chain: 16-18" (40-45cm)
£70 (SS141)

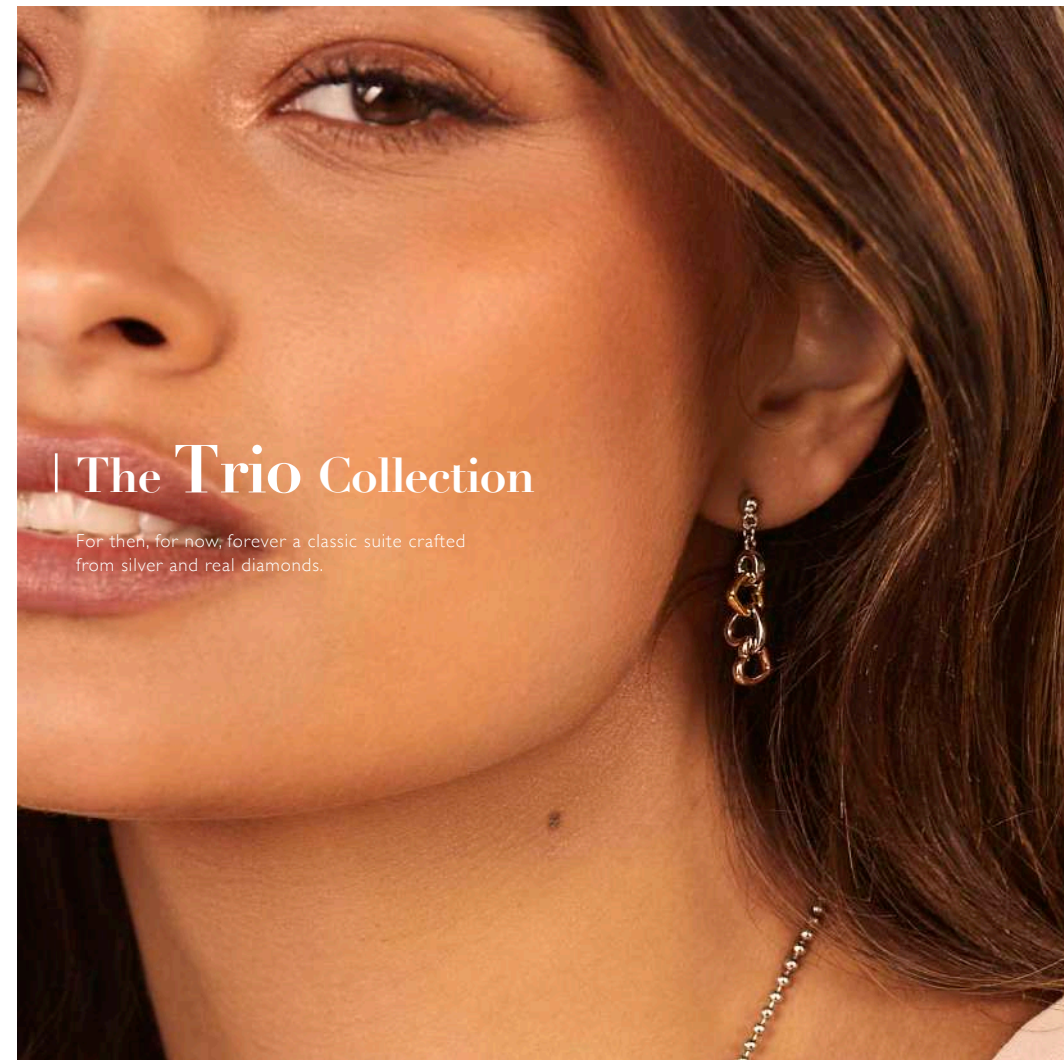


TRIPLE HEART EARRINGS
£80 (DE702)



TRIPLE HEART EARRINGS
£95 (DE703)

All designs are in either rhodium or 18ct gold-plated 925 sterling silver with at least one real diamond.
Rings available in sizes K to S.



| The Trio Collection

For then, for now, forever a classic suite crafted from silver and real diamonds.

All designs are in either rhodium or 18ct gold-plated 925 sterling silver with at least one real diamond.
Rings available in sizes K to S.



All designs are in either rhodium or 18ct gold-plated 925 sterling silver with at least one real diamond.
Rings available in sizes K to S.



**TRIPLE HEART
PENDANT**
chain: 16-18" (40-45cm)
£110 (DP836)



**TRIPLE HEART
PENDANT**
chain: 16-18" (40-45cm)
£85 (DP835)

All designs are in either rhodium or 18ct gold-plated 925 sterling silver with at least one real diamond.
Rings available in sizes K to S.



TEARDROP PENDANT
chain: 18-22" (45-55cm)
£125 (DP779)



TEARDROP PENDANT
chain: 18-22" (45-55cm)
£140 (DP780)



TEARDROP EARRINGS
£90 (DE644)



TEARDROP EARRINGS
£110 (DE645)

All designs are in either rhodium or 18ct gold-plated 925 sterling silver with at least one real diamond.
Rings available in sizes K to S.



All designs are in either rhodium or 18ct gold-plated 925 sterling silver with at least one real diamond.
Rings available in sizes K to S.



All designs are in either rhodium or 18ct gold-plated 925 sterling silver with at least one real diamond.
Rings available in sizes K to S.



PENDANT
chain: 18-22" (45-55cm)
£125 (DP543)



DROP EARRINGS
£95 (DE388)



PENDANT
chain: 18-22" (45-55cm)
£130 (DP544)



DROP EARRINGS
£95 (DE389)

All designs are in either rhodium or 18ct gold-plated 925 sterling silver with at least one real diamond.
Rings available in sizes K to S.



'A' PENDANT
chain: 16-18" (40-45cm)
£45 (DP401)



'B' PENDANT
chain: 16-18" (40-45cm)
£45 (DP402)



'C' PENDANT
chain: 16-18" (40-45cm)
£45 (DP403)



'D' PENDANT
chain: 16-18" (40-45cm)
£45 (DP404)

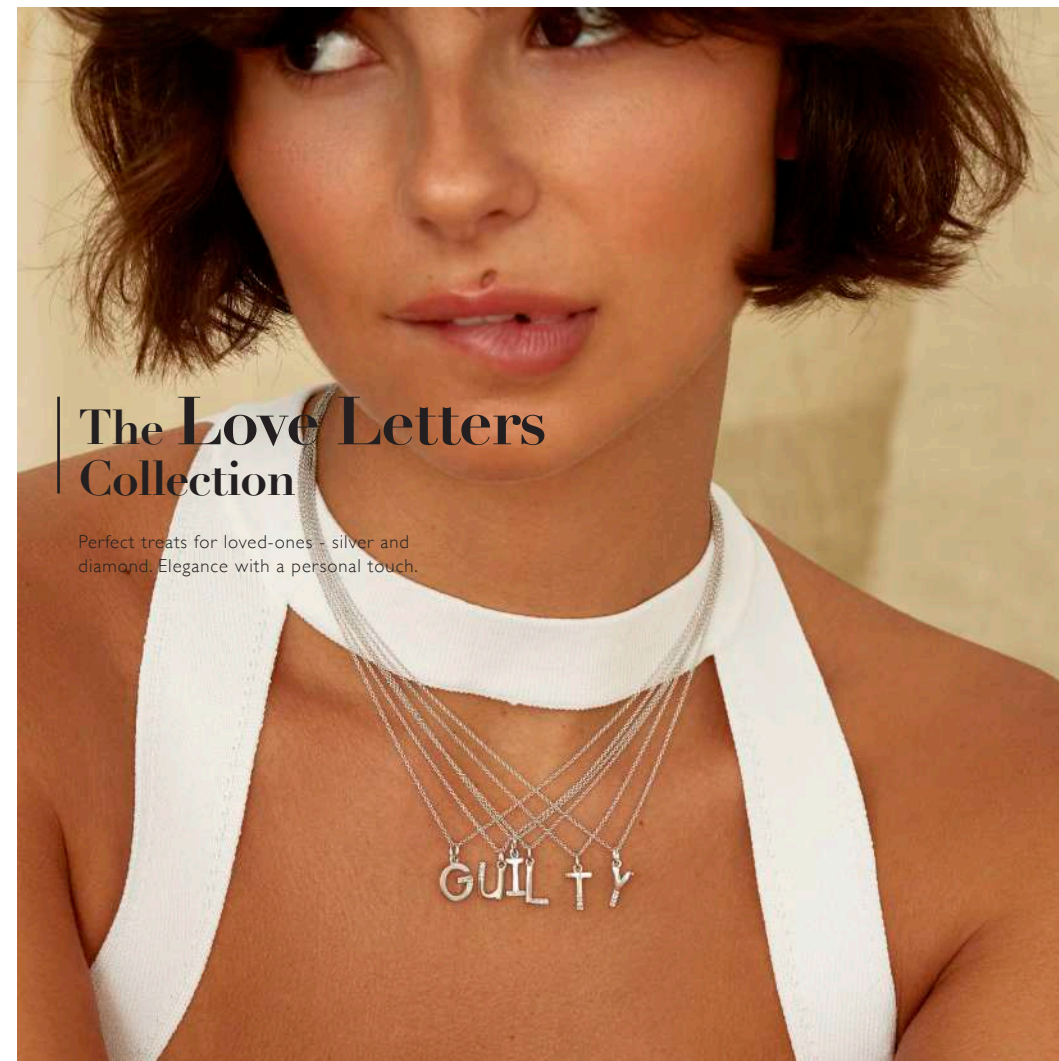


'E' PENDANT
chain: 16-18" (40-45cm)
£45 (DP405)



'F' PENDANT
chain: 16-18" (40-45cm)
£45 (DP406)

All designs are in either rhodium or 18ct gold-plated 925 sterling silver with at least one real diamond.
Rings available in sizes K to S.



The Love Letters Collection

Perfect treats for loved-ones - silver and diamond. Elegance with a personal touch.

All designs are in either rhodium or 18ct gold-plated 925 sterling silver with at least one real diamond.
Rings available in sizes K to S.

HOT DIAMONDS / Love letters



'G' PENDANT
chain: 16-18" (40-45cm)
£45 (DP407)



'H' PENDANT
chain: 16-18" (40-45cm)
£45 (DP408)



'I' PENDANT
chain: 16-18" (40-45cm)
£45 (DP409)



'M' PENDANT
chain: 16-18" (40-45cm)
£45 (DP413)



'N' PENDANT
chain: 16-18" (40-45cm)
£45 (DP414)



'O' PENDANT
chain: 16-18" (40-45cm)
£45 (DP415)



'J' PENDANT
chain: 16-18" (40-45cm)
£45 (DP410)



'K' PENDANT
chain: 16-18" (40-45cm)
£45 (DP411)



'L' PENDANT
chain: 16-18" (40-45cm)
£45 (DP412)



'P' PENDANT
chain: 16-18" (40-45cm)
£45 (DP416)



'Q' PENDANT
chain: 16-18" (40-45cm)
£45 (DP417)



'R' PENDANT
chain: 16-18" (40-45cm)
£45 (DP418)

All designs are in either rhodium or 18ct gold-plated 925 sterling silver with at least one real diamond.
Rings available in sizes K to S.

HOT DIAMONDS / Love letters

All designs are in either rhodium or 18ct gold-plated 925 sterling silver with at least one real diamond.
Rings available in sizes K to S.

HOT DIAMONDS / Love letters



'S' PENDANT
chain: 16-18" (40-45cm)
£45 (DP419)



'T' PENDANT
chain: 16-18" (40-45cm)
£45 (DP420)



'U' PENDANT
chain: 16-18" (40-45cm)
£45 (DP421)



'V' PENDANT
chain: 16-18" (40-45cm)
£45 (DP422)



'W' PENDANT
chain: 16-18" (40-45cm)
£45 (DP423)



'X' PENDANT
chain: 16-18" (40-45cm)
£45 (DP424)



'Y' PENDANT
chain: 16-18" (40-45cm)
£45 (DP425)



'Z' PENDANT
chain: 16-18" (40-45cm)
£45 (DP426)

All designs are in either rhodium or 18ct gold-plated 925 sterling silver with at least one real diamond.
Rings available in sizes K to S.

HOT DIAMONDS / Love letters



All designs are in either rhodium or 18ct gold-plated 925 sterling silver with at least one real diamond.
Rings available in sizes K to S.

The Celestial Collection

The moon is full of mystery and one of the most beautiful objects we could wish to see. Whilst visible most nights, it's incredible beauty should not be taken for granted. Ours is a wintry, quarter moon. Hand-set with sparkly topaz and surrounded by a sterling silver halo. Of course, it is also hand-set with a real diamond. So, carry the magic of the moon with you, wherever you go, and let its beauty shine.



All designs are in either rhodium or 18ct gold-plated 925 sterling silver with at least one real diamond.
Rings available in sizes K to S.



STUD EARRINGS
£65 (DE686)



PENDANT
chain: 16-18" (40-45cm)
£75 (DP859)

WHITE
TOPAZ



LARGE PENDANT
chain: 16-18" (40-45cm)
£85 (DP860)



BRACELET
£55 (DL642)

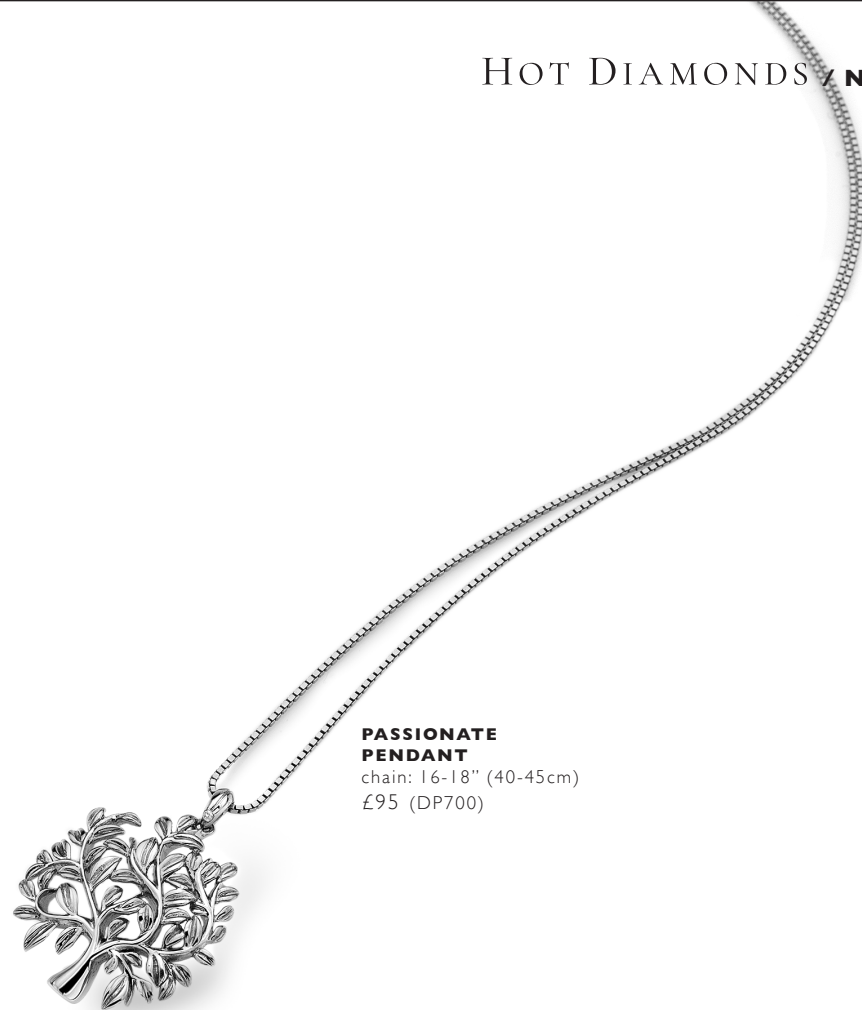


RING
£60 (DR232)

All designs are in either rhodium or 18ct gold-plated 925 sterling silver with at least one real diamond.
Rings available in sizes K to S.



All designs are in either rhodium or 18ct gold-plated 925 sterling silver with at least one real diamond.
Rings available in sizes K to S.



**PASSIONATE
PENDANT**
chain: 16-18" (40-45cm)
£95 (DP700)

All designs are in either rhodium or 18ct gold-plated 925 sterling silver with at least one real diamond.
Rings available in sizes K to S.



All designs are in either rhodium or 18ct gold-plated 925 sterling silver with at least one real diamond.
Rings available in sizes K to S.



EARRINGS
£50 (DE248)

PENDANT
chain: 16-18" (40-45cm)
£70 (DP230)



BEE PENDANT
chain: 18-22" (45-55cm)
£85 (DP565)



BEE EARRINGS
£50 (DE638)

All designs are in either rhodium or 18ct gold-plated 925 sterling silver with at least one real diamond.
Rings available in sizes K to S.



PENDANT
chain: 16-18" (40-45cm)
£125 (DPI43)



PENDANT
chain: 29" (75cm)
£175 (DPI32)

All designs are in either rhodium or 18ct gold-plated 925 sterling silver with at least one real diamond.
Rings available in sizes K to S.



The Memories Collection

Cherish the one you love and keep them close to you forever with our silver and diamond collection of lockets.

All designs are in either rhodium or 18ct gold-plated 925 sterling silver with at least one real diamond.
Rings available in sizes K to S.



All designs are in either rhodium or 18ct gold-plated 925 sterling silver with at least one real diamond.
Rings available in sizes K to S.



ENGRAVED LOCKET
chain: 18" (45cm)
£150 (DP772)



ENGRAVED LOCKET
chain: 18" (45cm)
£130 (DP773)

All designs are in either rhodium or 18ct gold-plated 925 sterling silver with at least one real diamond.
Rings available in sizes K to S.



LOCKET PENDANT
chain: 18" (45cm)
£110 (DP495)



LOCKET PENDANT
chain: 18" (45cm)
£110 (DP493)



HEART LOCKET
chain: 16-18" (40-45cm)
£110 (DP881)



PENDANT
chain: 18" (45cm)
£115 (DP142)



HEART LOCKET
chain: 22"-24" (55-61cm)
£145 (DP669)



CIRCLE STUD EARRINGS
£50 (DE650)



CIRCLE PENDANT
chain: 16-18" (40-45cm)
£110 (DP786)



TWIST BANGLE
£195 (DC168)



TEARDROP EARRINGS
£70 (DE648)

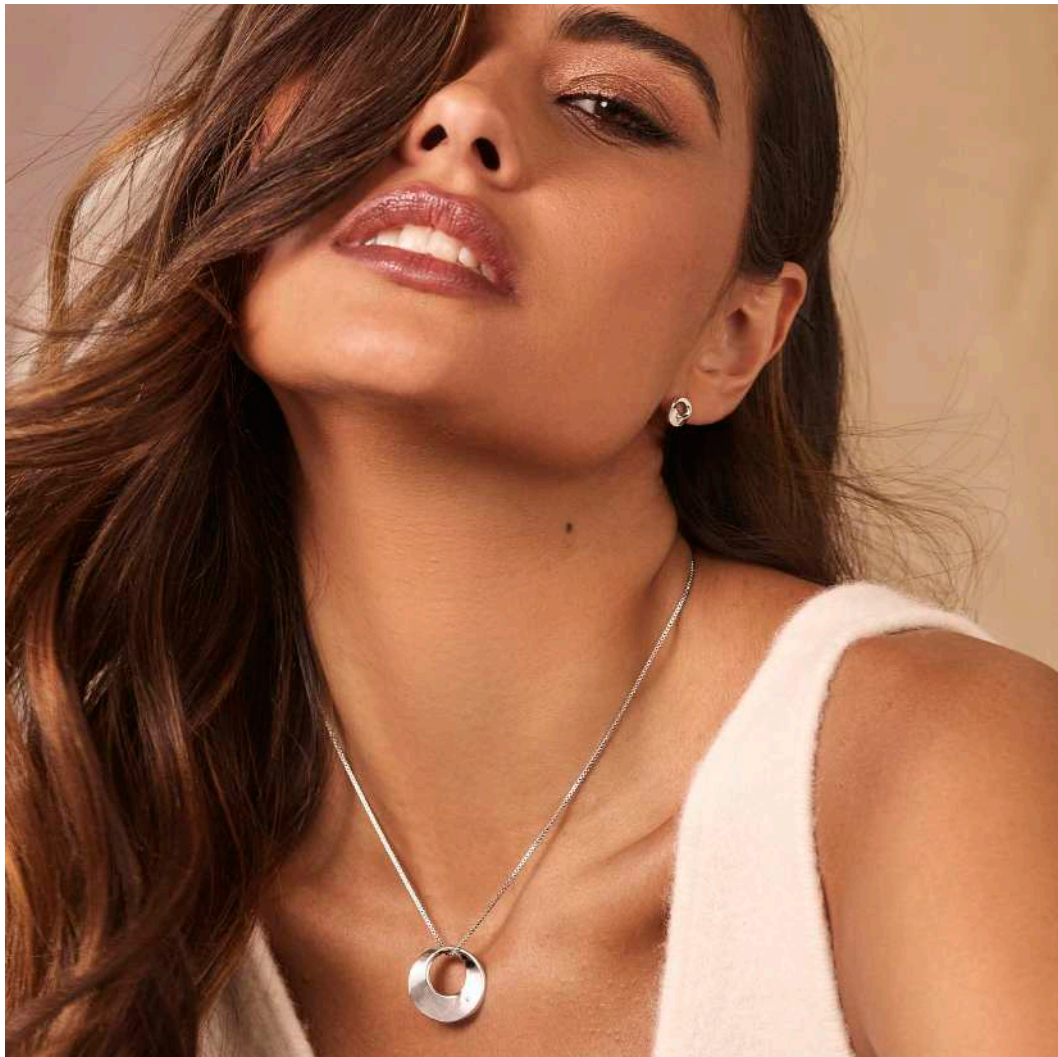
All designs are in either rhodium or 18ct gold-plated 925 sterling silver with at least one real diamond.
Rings available in sizes K to S.



The Quest Collection

Our Quest collection is inspired by the twists and turns, rough and smooth we encounter as we wander our way through the world. Every now and then, life offers you up a diamond!

All designs are in either rhodium or 18ct gold-plated 925 sterling silver with at least one real diamond.
Rings available in sizes K to S.



All designs are in either rhodium or 18ct gold-plated 925 sterling silver with at least one real diamond.
Rings available in sizes K to S.



**CIRCLE STUD
EARRINGS - PLAIN**
£50 (DE651)



**CIRCLE PENDANT
PLAIN - PLAIN**
chain: 16-18" (40-45cm)
£95 (DP787)



FILIGREE RING
£70 (DR222)

All designs are in either rhodium or 18ct gold-plated 925 sterling silver with at least one real diamond.
Rings available in sizes K to S.



**WHITE TOPAZ
PENDANT**
chain: 16-18" (40-45cm)
£70 (DP782)

WHITE
TOPAZ



**WHITE TOPAZ
EARRINGS**
£75 (DE646)



**WHITE TOPAZ
PENDANT - LARGE**
chain: 16-18" (40-45cm)
£80 (DP781)

All designs are in either rhodium or 18ct gold-plated 925 sterling silver with at least one real diamond.
Rings available in sizes K to S.

The Behold Collection

Do you think buildings can become more beautiful after years in the cold wind and driving rain? If so, maybe this naturally crafted silver, diamond and white topaz collection is for you. Beauty is in the eye of the beholder.



All designs are in either rhodium or 18ct gold-plated 925 sterling silver with at least one real diamond.
Rings available in sizes K to S.



**WHITE TOPAZ
DROP EARRINGS**
£60 (DE628)

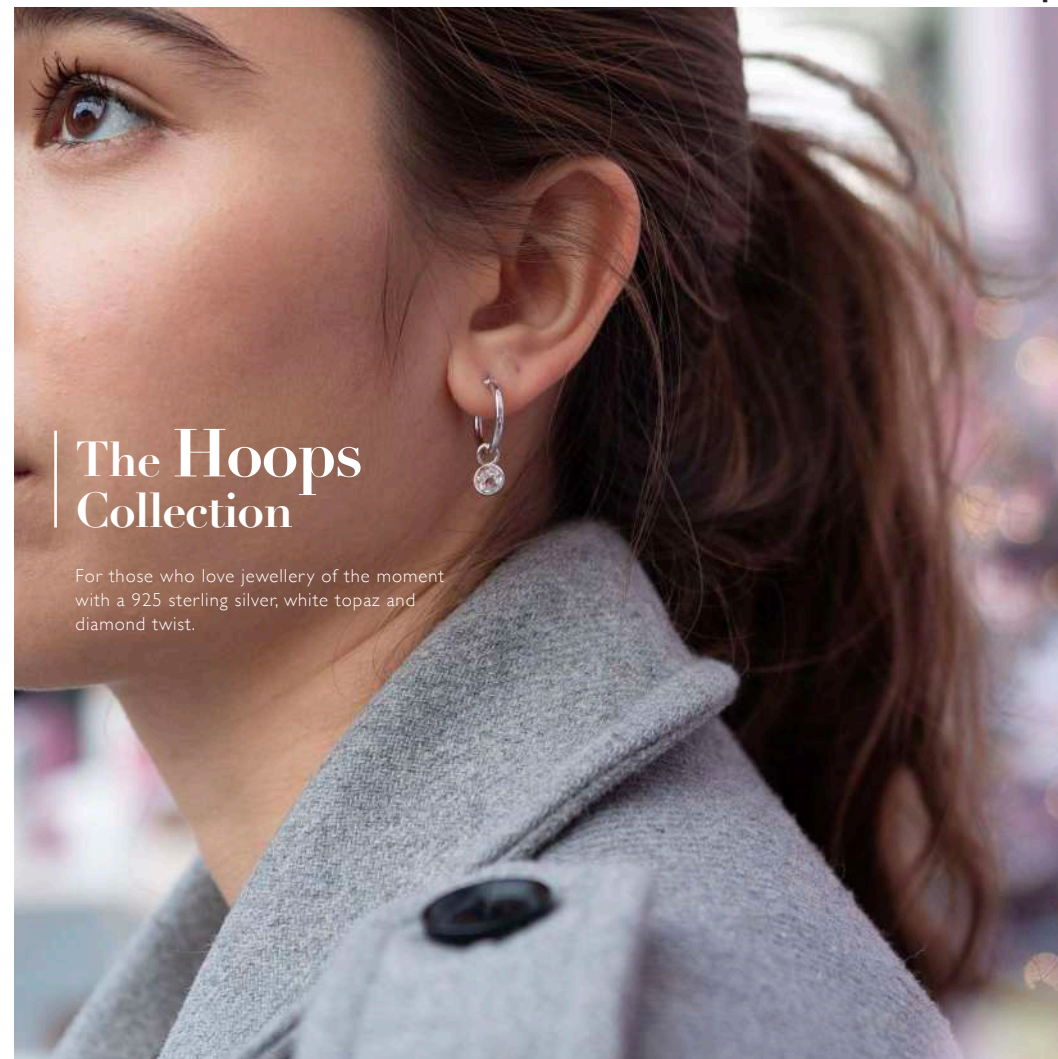


EARRINGS
£60 (DE625)



**WHITE TOPAZ
EARRINGS**
£110 (DE623)

All designs are in either rhodium or 18ct gold-plated 925 sterling silver with at least one real diamond.
Rings available in sizes K to S.



The Hoops Collection

For those who love jewellery of the moment
with a 925 sterling silver, white topaz and
diamond twist.

All designs are in either rhodium or 18ct gold-plated 925 sterling silver with at least one real diamond.
Rings available in sizes K to S.



The Forget me not collection

Romantically symbolic, the Forget-Me-Not is a floral celebration of true love and remembrance. As with every Hot Diamonds design, our Forget-Me-Nots are each adorned with a real diamond.

All designs are in either rhodium or 18ct gold-plated 925 sterling silver with at least one real diamond.
Rings available in sizes K to S.



EARRINGS
£50 (DE618)



PENDANT
chain: 16-18" (40-45cm)
£60 (DP749)



RING
£70 (DR214)



BRACELET
£110 (DL596)

All designs are in either rhodium or 18ct gold-plated 925 sterling silver with at least one real diamond.
Rings available in sizes K to S.



CIRCLE BRACELET
£95 (DL568)

WHITE
TOPAZ



**INTERLOCKING
EARRINGS**
£80 (DE533)

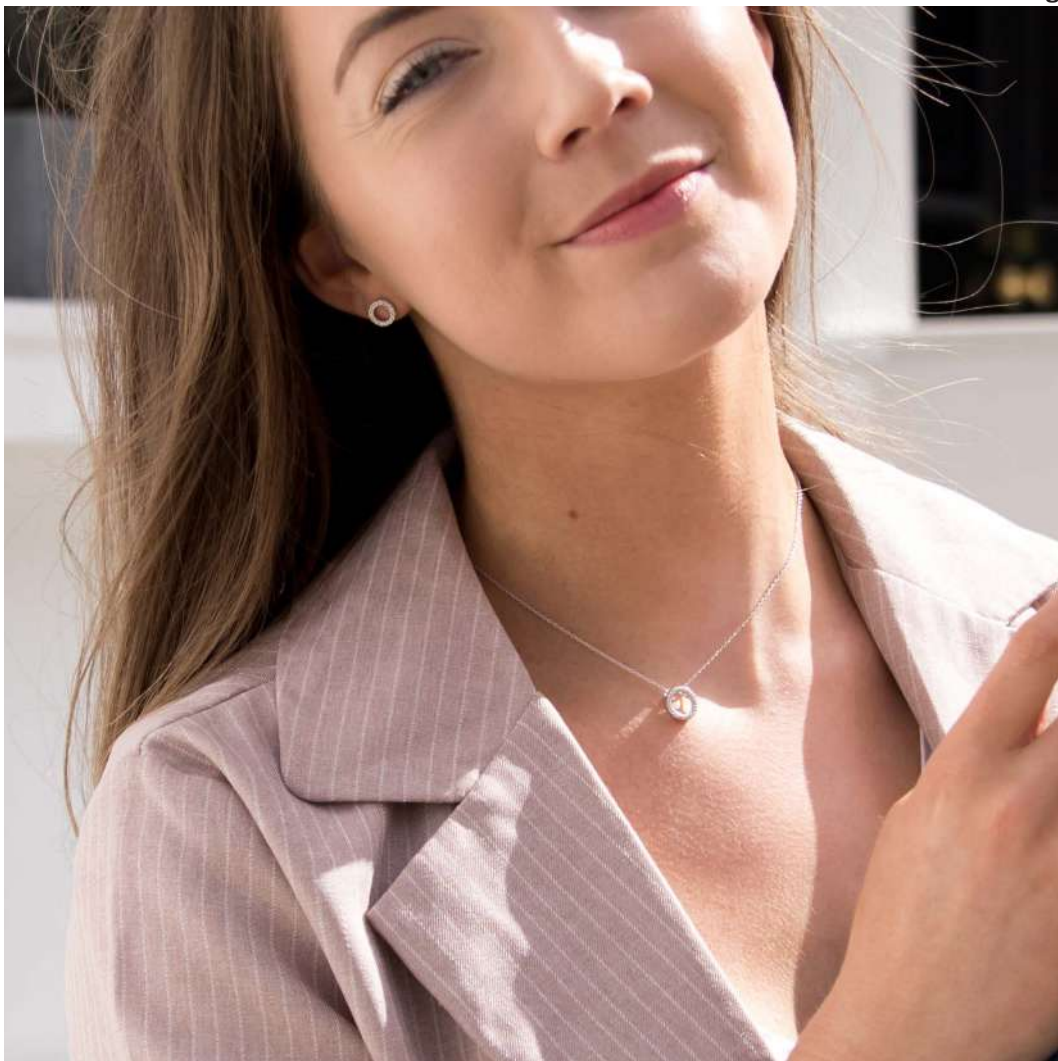
All designs are in either rhodium or 18ct gold-plated 925 sterling silver with at least one real diamond.
Rings available in sizes K to S.



The Striking Collection

Sparkling with white topaz, these scintillating designs will make you shine.

All designs are in either rhodium or 18ct gold-plated 925 sterling silver with at least one real diamond.
Rings available in sizes K to S.



All designs are in either rhodium or 18ct gold-plated 925 sterling silver with at least one real diamond.
Rings available in sizes K to S.



CIRCLE NECKLACE
chain: 16-18" (40-45cm)
£95 (DN127)



CIRCLE PENDANT
chain: 16-18" (40-45cm)
£90 (DP661)



CIRCLE EARRINGS
£75 (DE534)



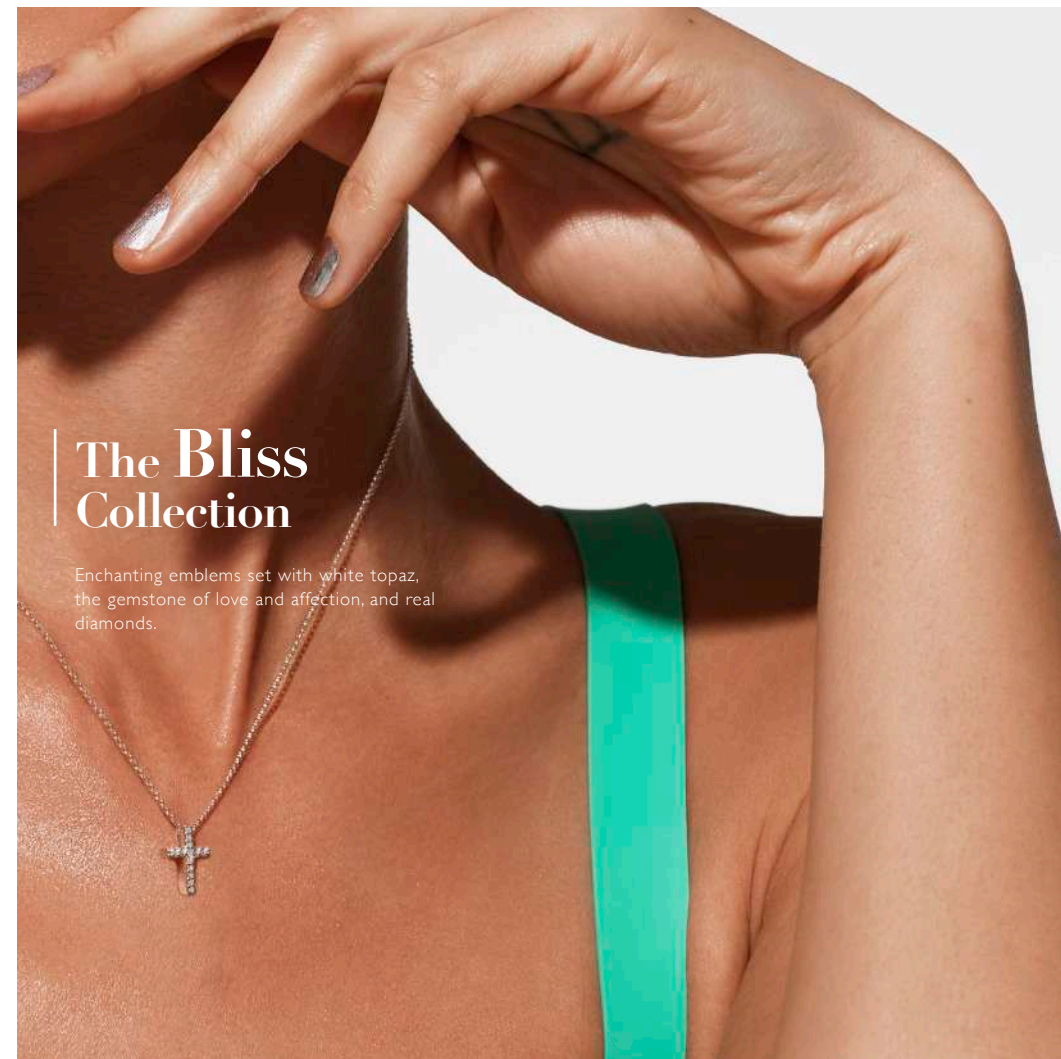
HEART NECKLACE
chain: 16-18" (40-45cm)
£95 (DN128)

All designs are in either rhodium or 18ct gold-plated 925 sterling silver with at least one real diamond.
Rings available in sizes K to S.



CROSS PENDANT
chain: 16-18" (40-45cm)
£55 (DP696)

All designs are in either rhodium or 18ct gold-plated 925 sterling silver with at least one real diamond.
Rings available in sizes K to S.



The Bliss Collection

Enchanting emblems set with white topaz,
the gemstone of love and affection, and real
diamonds.

All designs are in either rhodium or 18ct gold-plated 925 sterling silver with at least one real diamond.
Rings available in sizes K to S.



The Togetherness Collection

The eternal connection of Mother and Child celebrated with silver and real diamonds.

All designs are in either rhodium or 18ct gold-plated 925 sterling silver with at least one real diamond.
Rings available in sizes K to S.



**OPEN HEART
EARRINGS**
£80 (DE605)



**OPEN HEART
PENDANT**
chain: 16-18" (40-45cm)
£85 (DP731)

All designs are in either rhodium or 18ct gold-plated 925 sterling silver with at least one real diamond.
Rings available in sizes K to S.



**OPEN HEART
PENDANT**

chain: 16-18" (40-45cm)
£95 (DP732)

WHITE
TOPAZ

All designs are in either rhodium or 18ct gold-plated 925 sterling silver with at least one real diamond.
Rings available in sizes K to S.



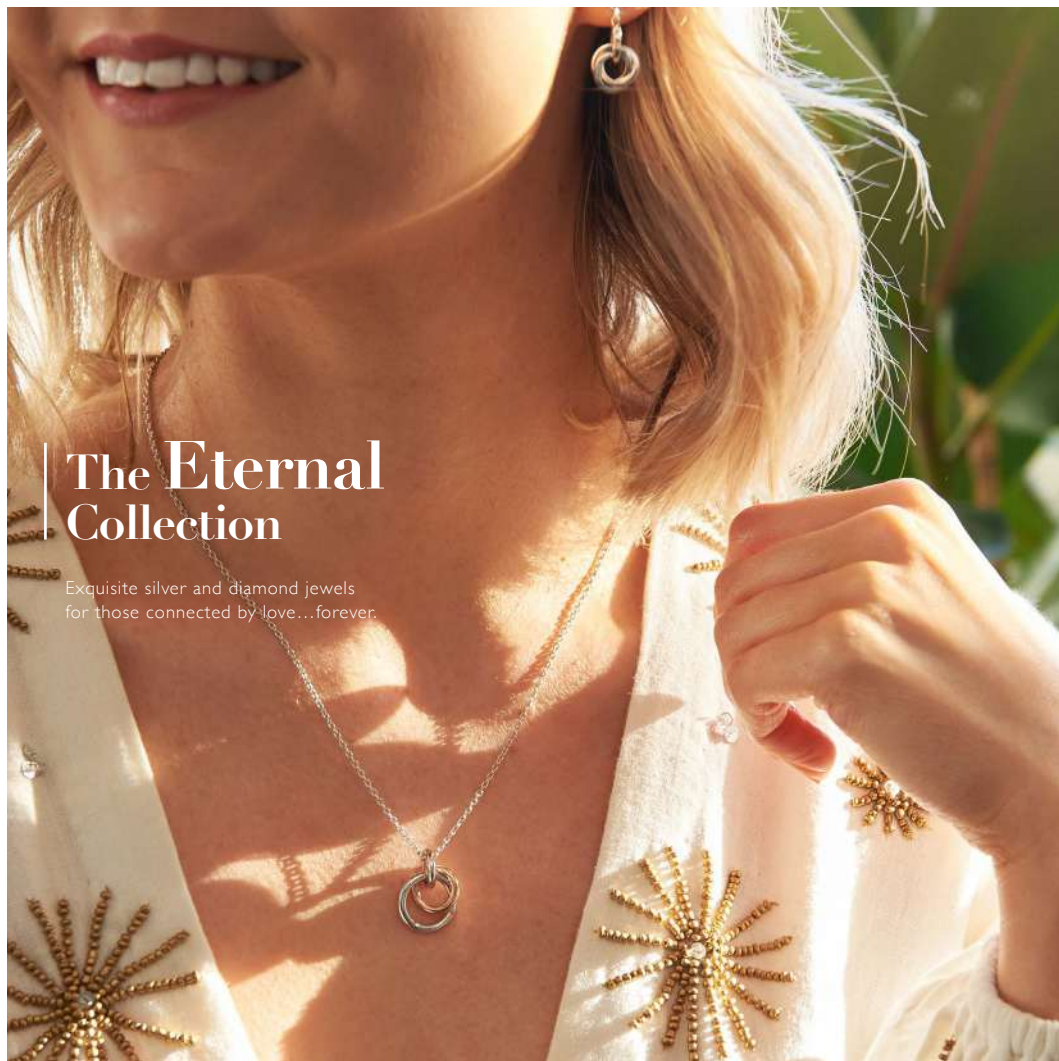
BRACELET
£95 (DL589)

WHITE
TOPAZ



BRACELET
£110 (DL590)

All designs are in either rhodium or 18ct gold-plated 925 sterling silver with at least one real diamond.
Rings available in sizes K to S.



The Eternal Collection

Exquisite silver and diamond jewels for those connected by love...forever.

All designs are in either rhodium or 18ct gold-plated 925 sterling silver with at least one real diamond. Rings available in sizes K to S.



EARRINGS
£85 (DE309)



RING
£80 (DR112)



PENDANT
chain: 16-18" (40-45cm)
£85 (DP372)

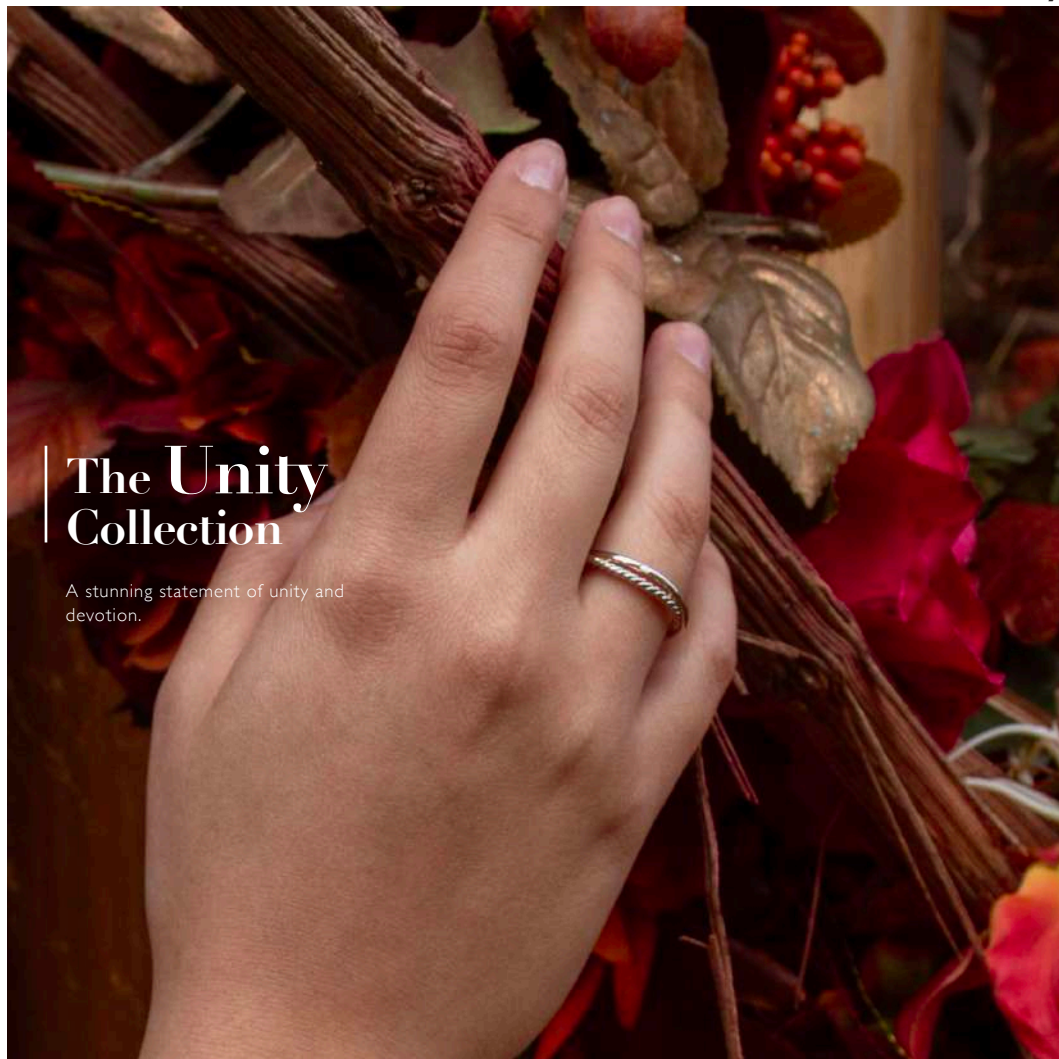


PENDANT
chain: 16-18" (40-45cm)
£95 (DP373)



EARRINGS
£75 (DE308)

All designs are in either rhodium or 18ct gold-plated 925 sterling silver with at least one real diamond. Rings available in sizes K to S.



The Unity Collection

A stunning statement of unity and devotion.

All designs are in either rhodium or 18ct gold-plated 925 sterling silver with at least one real diamond.
Rings available in sizes K to S.



EARRINGS
£50 (DE610)



RING
£45 (DR210)

All designs are in either rhodium or 18ct gold-plated 925 sterling silver with at least one real diamond.
Rings available in sizes K to S.



CIRCLE EARRINGS
£80 (DE580)

WHITE
TOPAZ



LOOP EARRINGS
£70 (DE581)



PENDANT
chain: 16-18" (40-45cm)
£95 (DP718)

All designs are in either rhodium or 18ct gold-plated 925 sterling silver with at least one real diamond.
Rings available in sizes K to S.



The Constant Collection

A striking silver suite that symbolises faithfulness - set with white topaz, the gemstone of love and affection, and a real diamond.

All designs are in either rhodium or 18ct gold-plated 925 sterling silver with at least one real diamond.
Rings available in sizes K to S.

Just to let you know...

- All Hot Diamonds pieces are set with at least one real diamond. For more information about our pieces please visit hotdiamonds.com/product-information.
- To ensure a long lasting finish all Hot Diamonds pieces are either rhodium plated or 18ct gold plated.
- Hot Diamonds Rings are available in sizes K-S.
- Hot Diamonds always uses conflict-free diamonds and only sources these from suppliers who are signed up to the Kimberley Process. Find out more at hotdiamonds.com/content/product-information.

| Gift Wrap

Hot Diamonds is always beautifully presented. Ideal for gifting and self-treats.



HOT DIAMONDS

| Brand Managers

■ Joan Raitt
T: 07717 861 262
E: joan.raitt@hdgroup.com

■ Chris McKenna
T: 07485 394 789
E: christine.mckenna@hdgroup.com

■ Chloe Lewis
T: 07717 508 603
E: chloe.lewis@hdgroup.com

■ Andrew Lewis
T: 07717 861 669
E: Andrew.Lewis@HDGroup.com

| Head Office

Customer Services
T: 0118 975 3331
E: cs@hdgroup.com

